



BURGESS & NIPLE
Engineers ■ Architects ■ Planners

US 19 Corridor Study

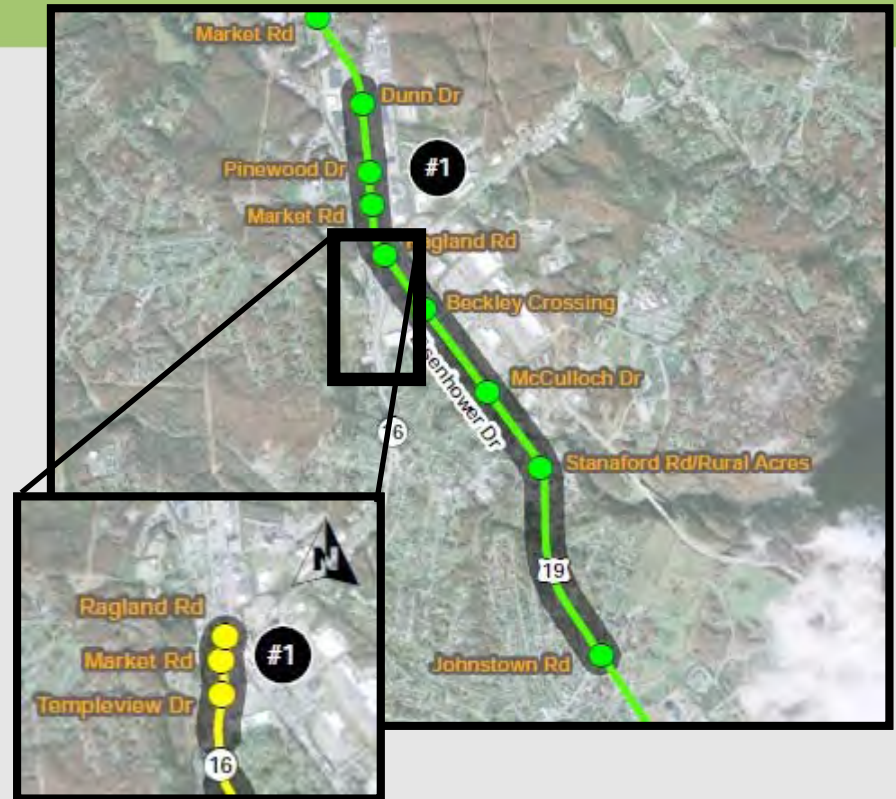
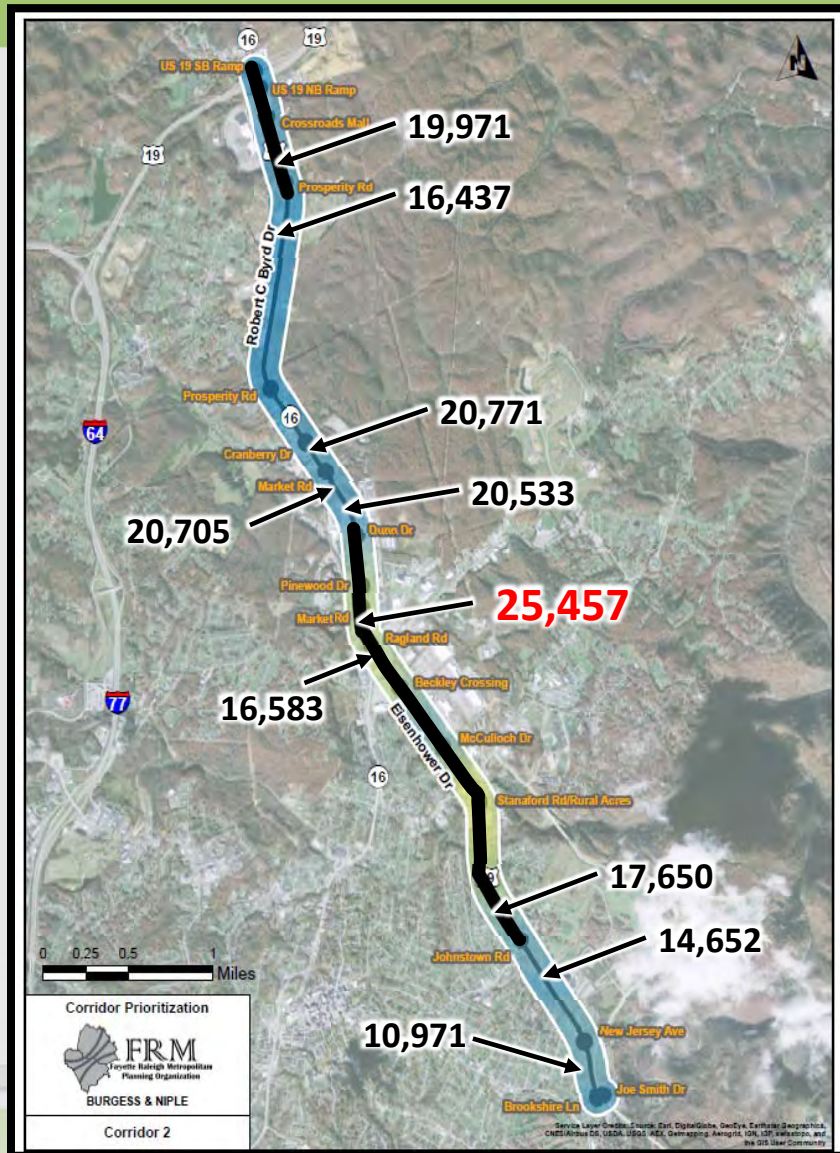
Stakeholder Meeting

December 19, 2017

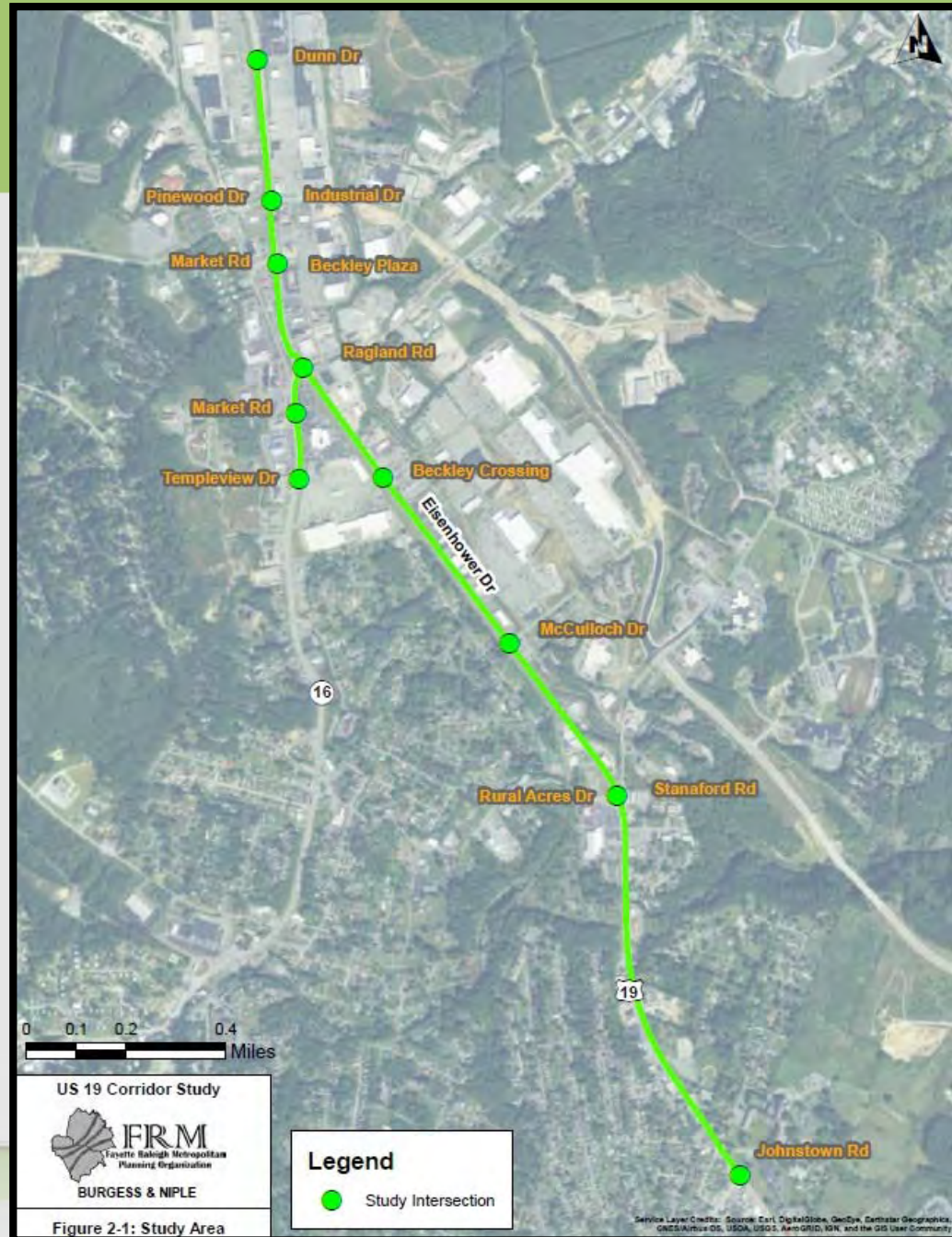
Agenda

- Review of Study Purpose, Goals, and Process
- Existing Conditions Highlights
- Improvement Concepts for Consideration
- Open Discussion/Wrap-Up

US 19 Corridor – Priority #1



Study Area



Study Purpose and Goals

- Identify low- to medium-cost solutions to improve traffic flows and reduce the number of crashes



Study Process

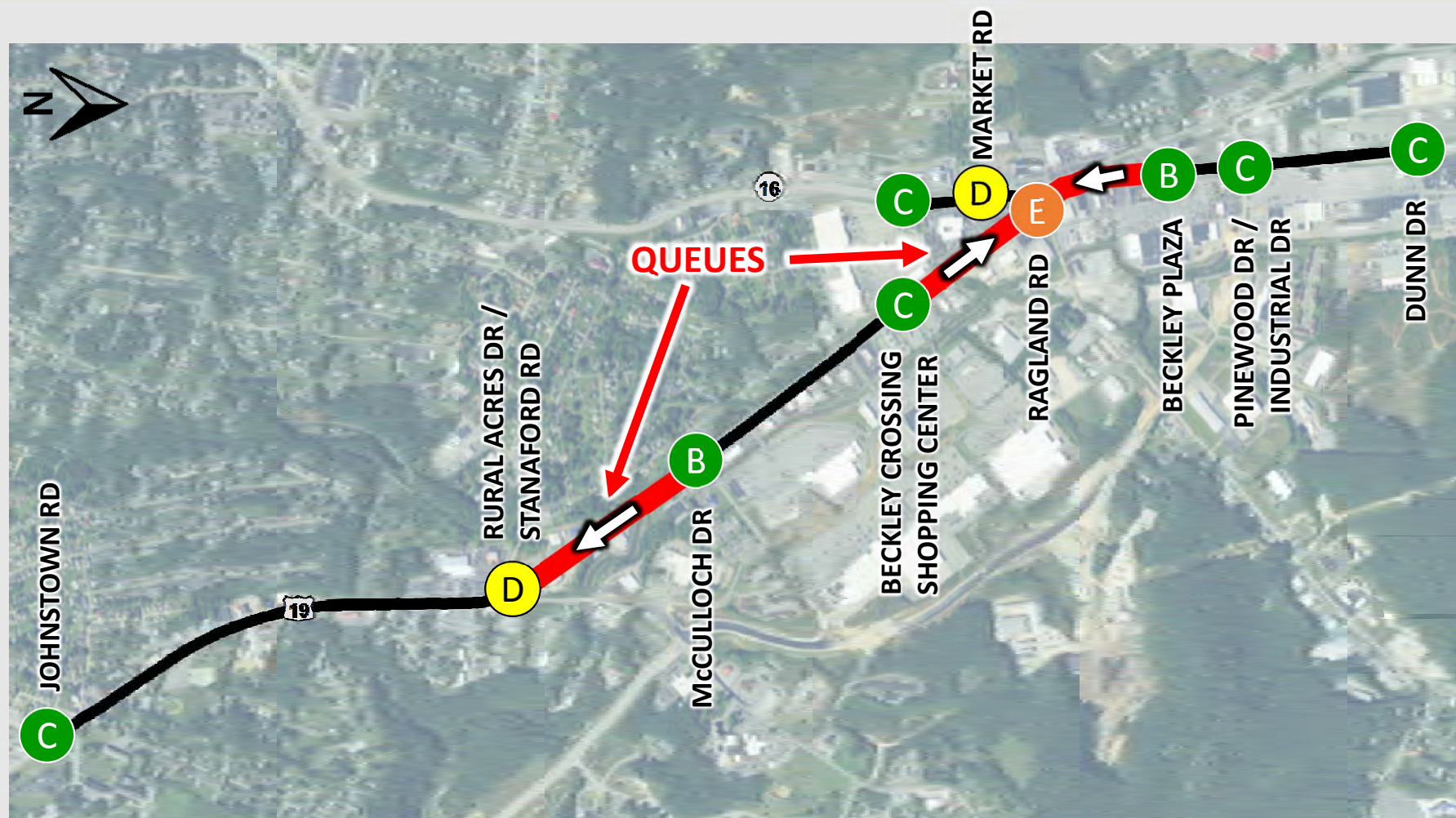


Existing Conditions Highlights

Traffic Operations

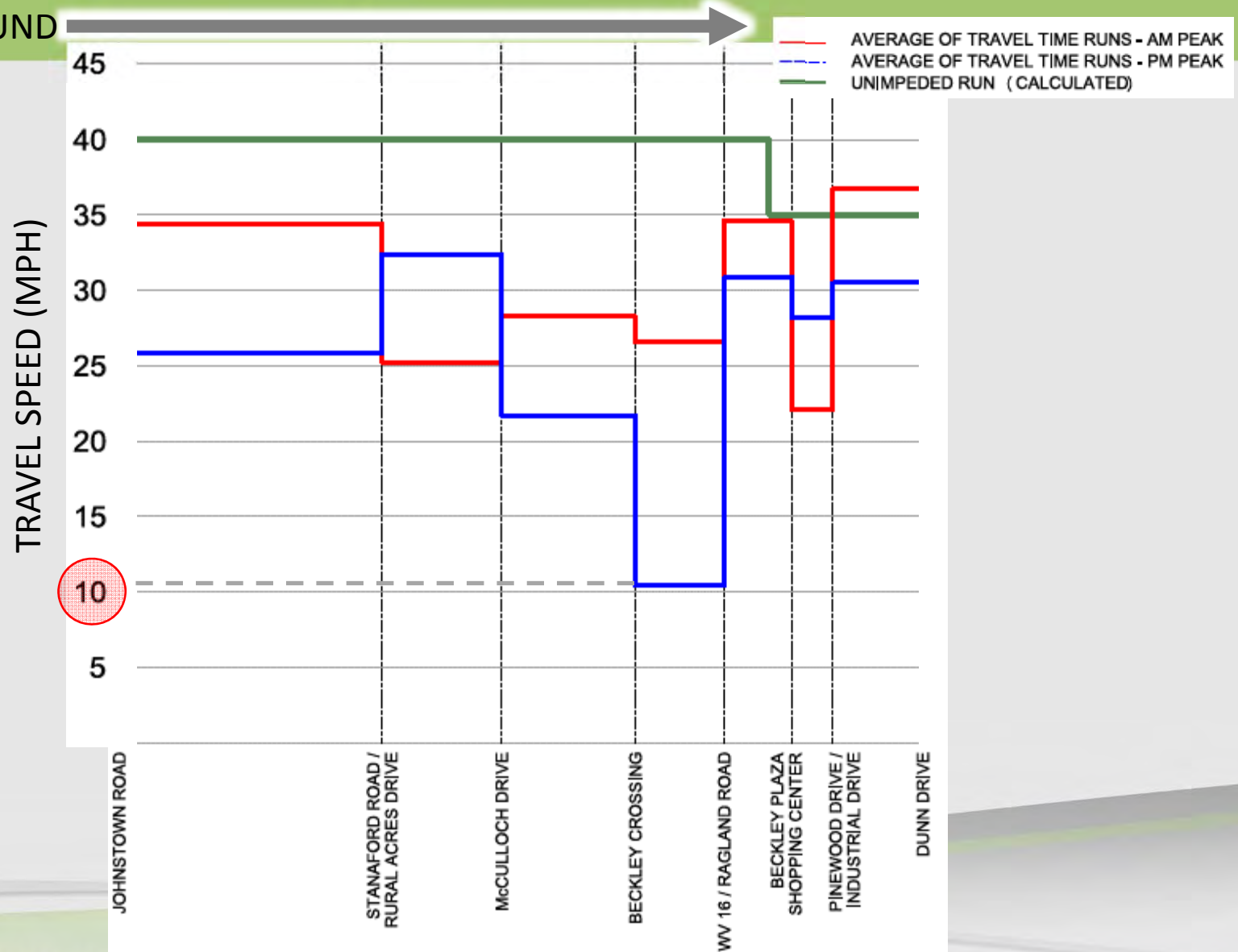
BURGESS & NIPLE

Existing PM Peak Intersection Operations



Existing Travel Speeds

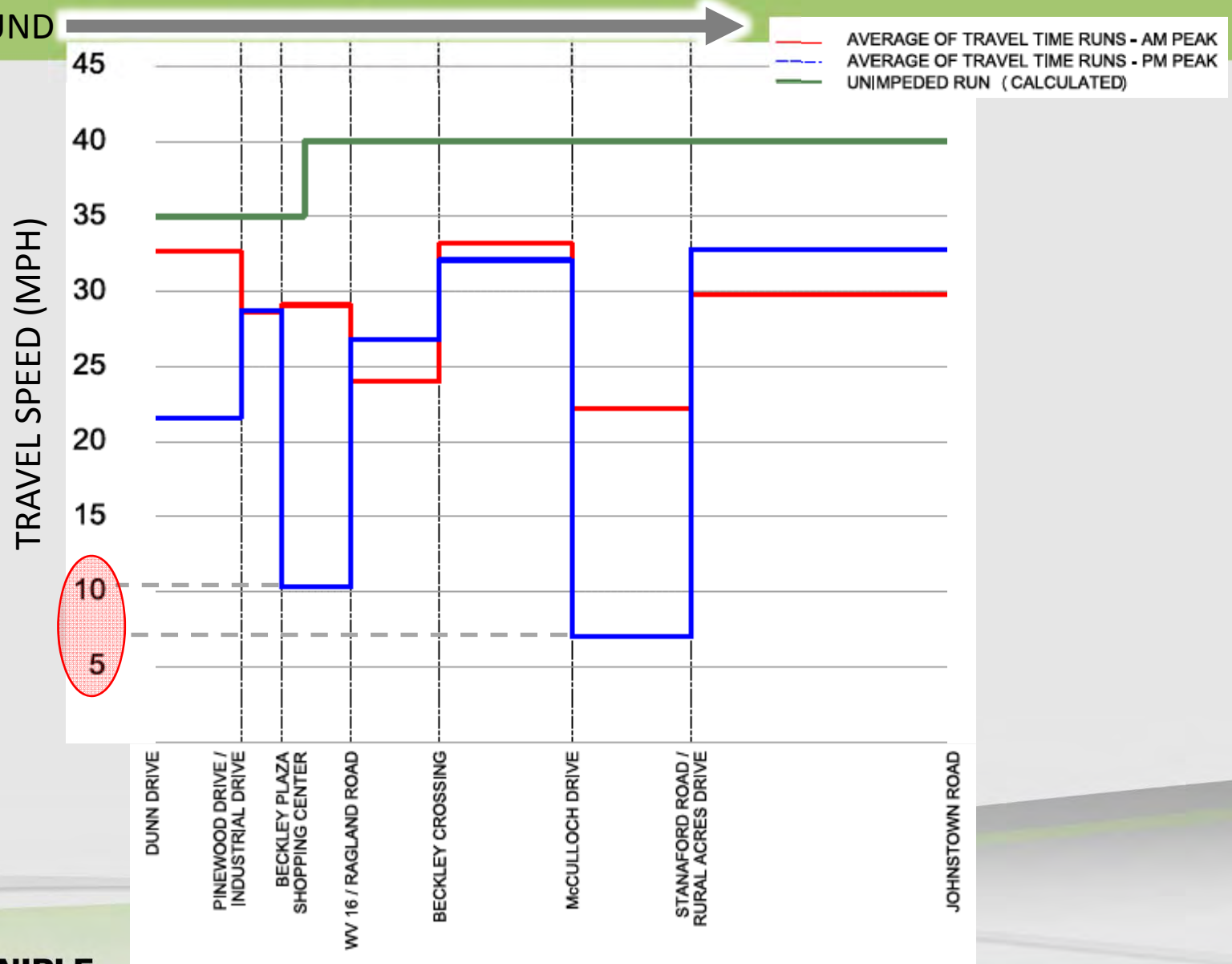
NORTHBOUND



BURGESS & NIPLE

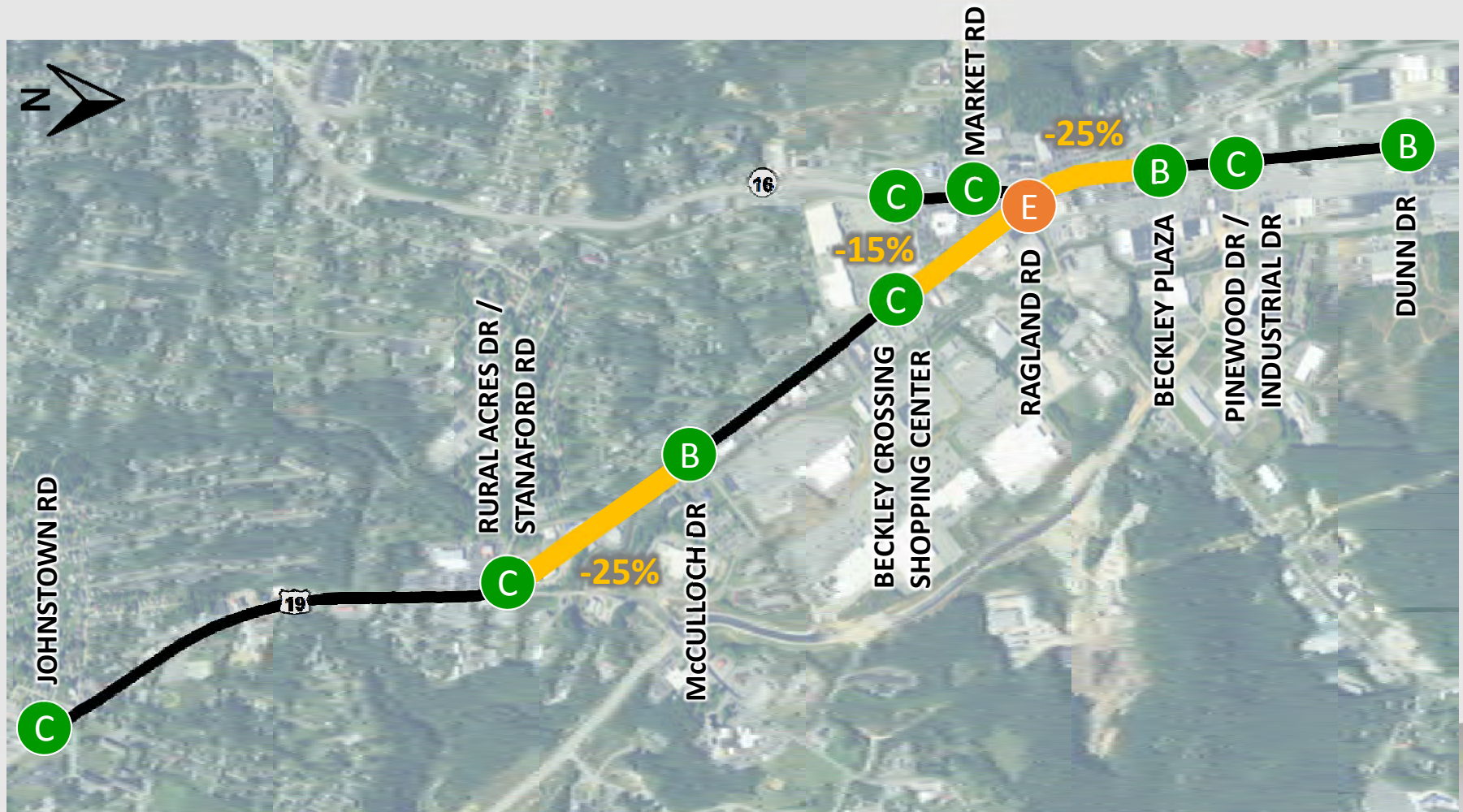
Existing Travel Speeds

SOUTHBOUND



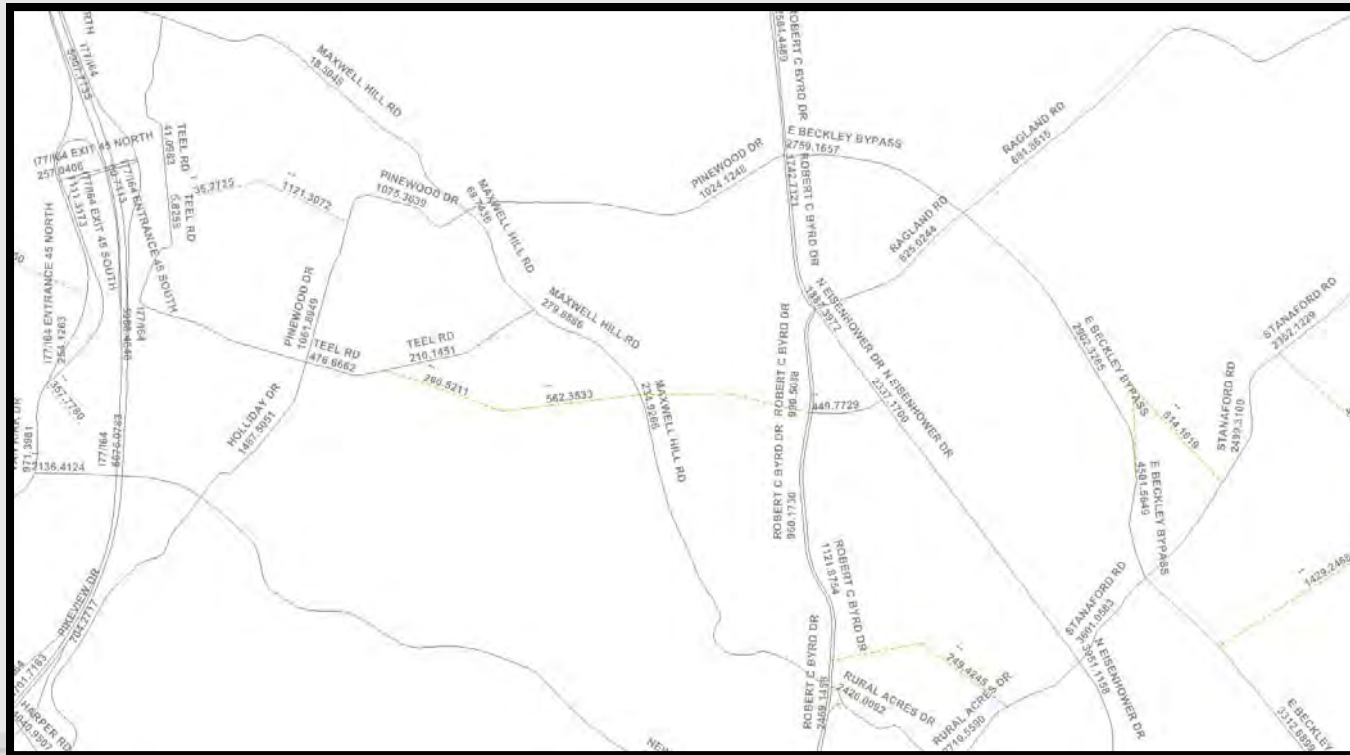
BURGESS & NIPLE

Existing PM Peak Intersection Operations OPTIMIZED TIMINGS



2040 Volumes

- “Best Guess” of future volumes
- Based on FRM’s Travel Demand Model

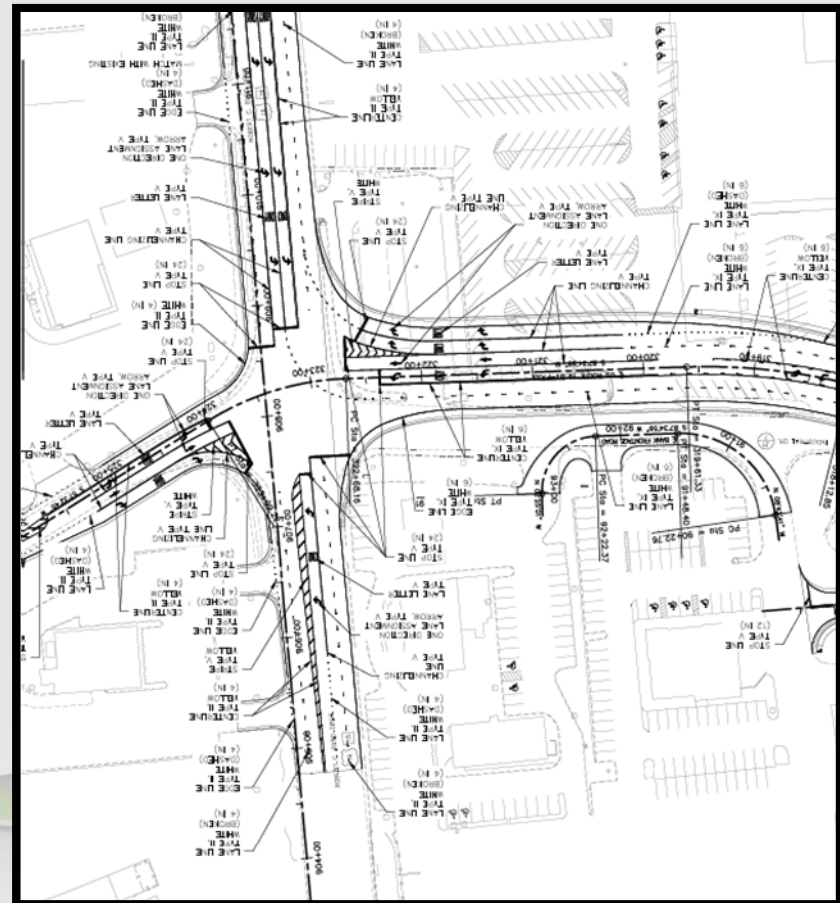


Beckley Bypass Effect

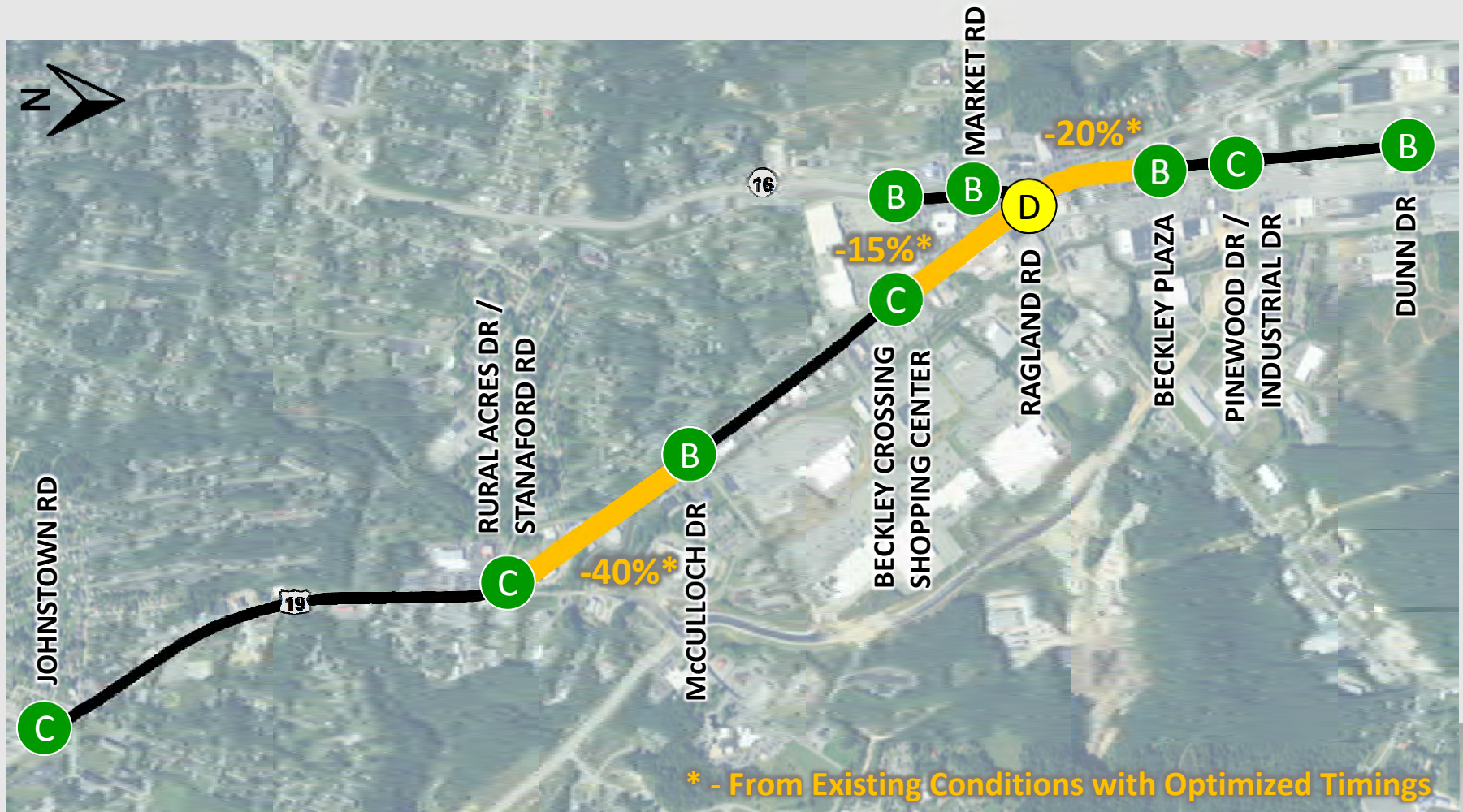


“No Build” Traffic Analysis

- Assumes existing roadway geometry
- Establishes a baseline to compare effects of potential improvements
- 2040 traffic volumes
- Optimized timings
- Includes improvements to Industrial Drive/ Pinewood Drive



No Build PM Peak Intersection Operations

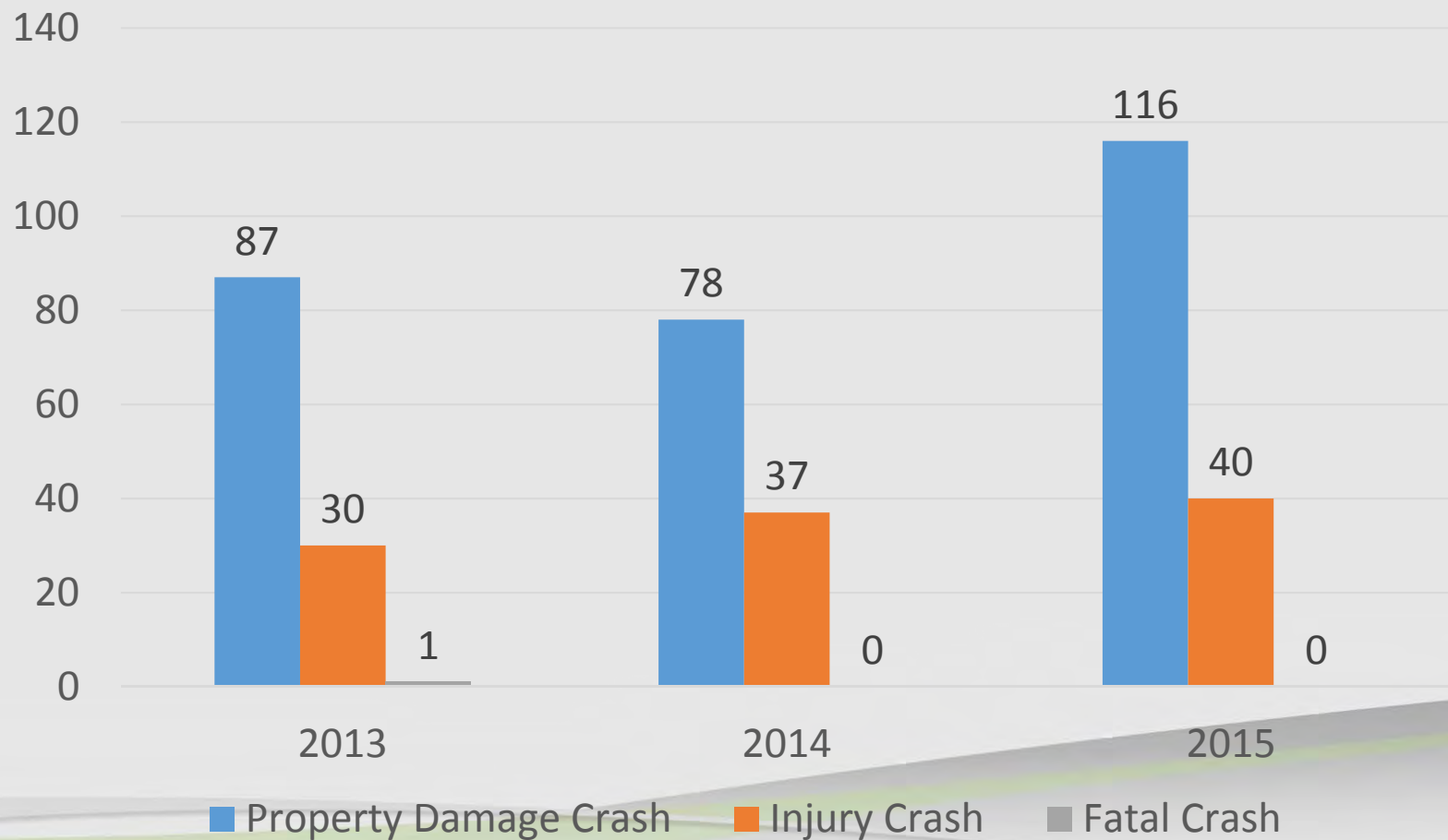


Safety

BURGESS & NIPLE

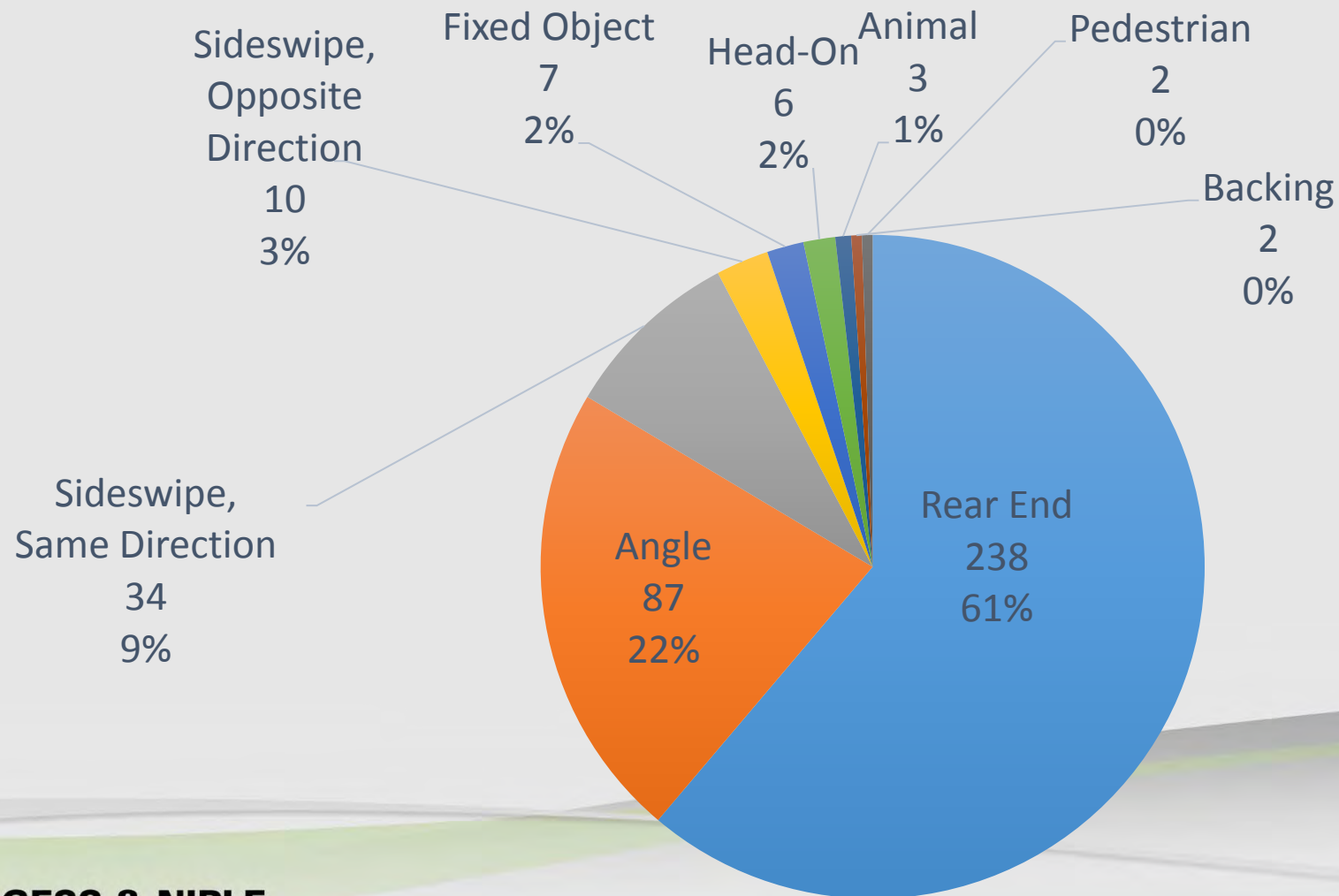
Safety Analysis: 2013 to 2015

■ 389 crashes

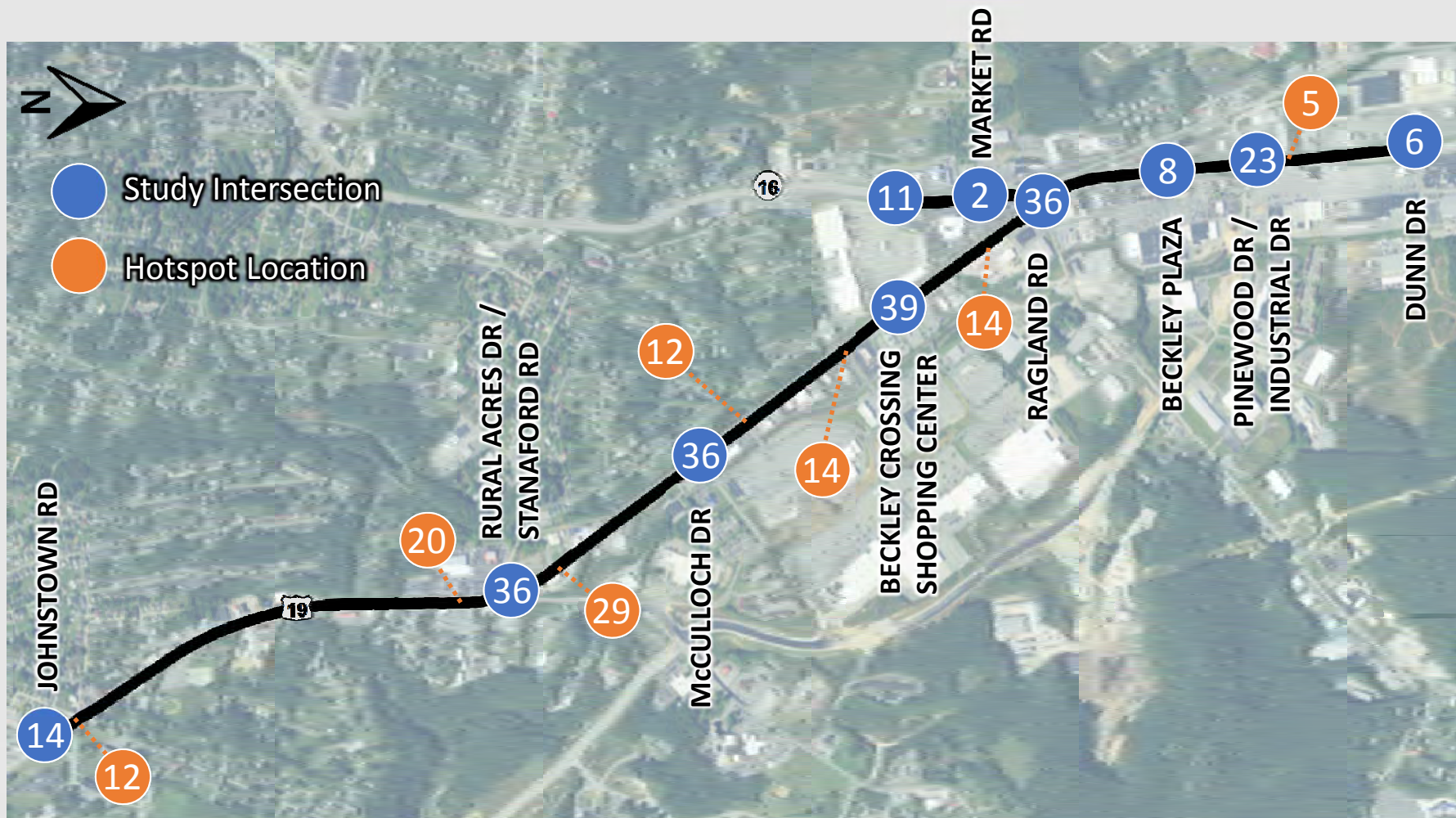


Safety Analysis: 2013 to 2015

■ 389 crashes



Crash Patterns



Improvement Concepts for Consideration

We Ask You To Please...

- Review the concepts
- Ask questions
- Tell us what you like/dislike about each concept

Johnstown Road Improvements



Improvement: Update clearance intervals and fix faulty detection

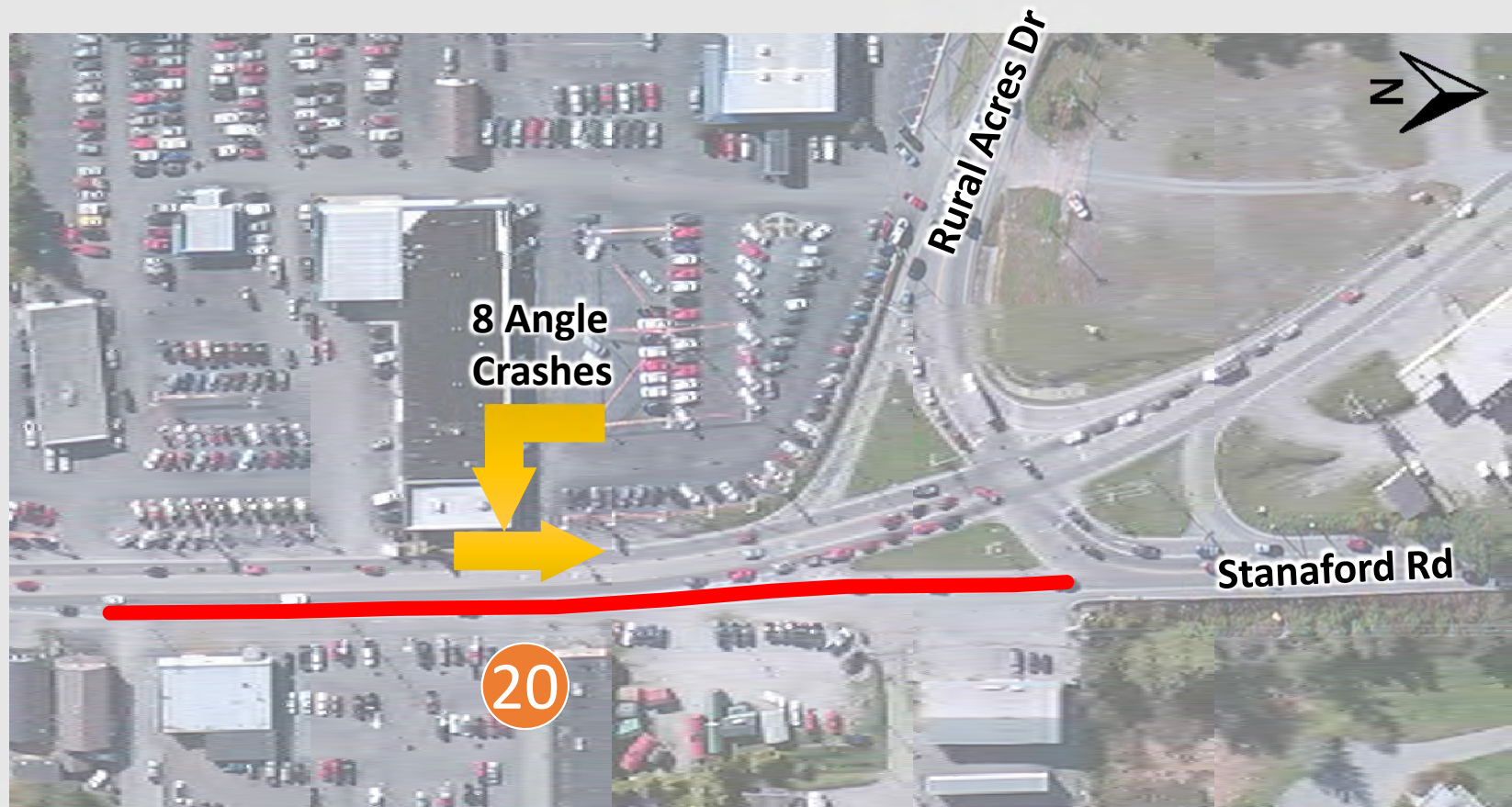
BURGESS & NIPLE

Update Clearance Intervals

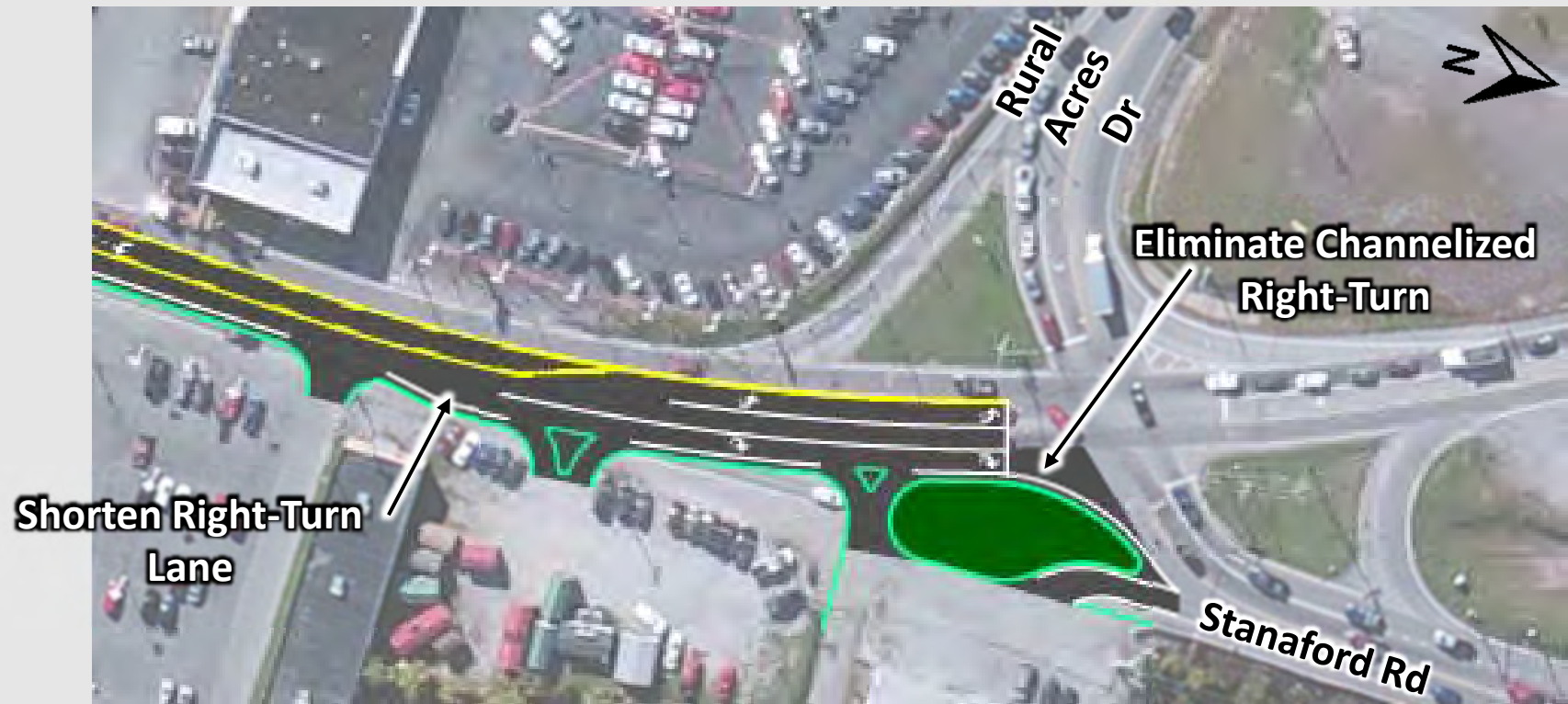
- Current clearance intervals are 4 seconds yellow, 1 second all-red
- Clearance intervals that are too short can contribute to:
 - Rear end crashes related to drivers stopping abruptly
 - Angle crashes resulting from signal violations
- Clearance intervals that are too long encourage drivers to disrespect the interval thereby contributing to red-light running
- Can reduce crashes by as much as 18%



Rural Acres Drive/Stanaford Road Improvements

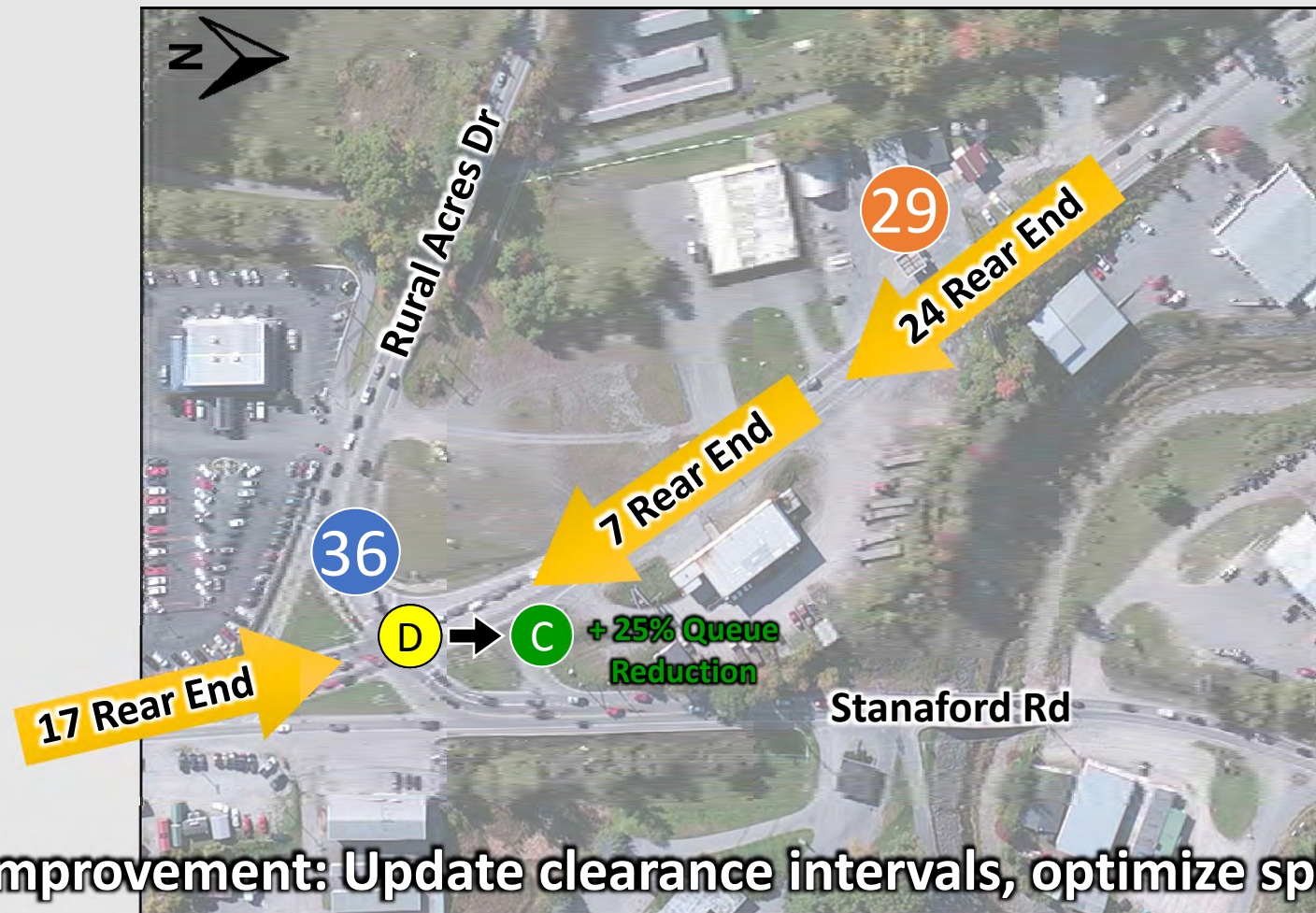


Rural Acres Drive/Stanaford Road Improvements



Estimated Project Costs: \$750,000

Rural Acres Drive/Stanaford Road Improvements



Improvement: Update clearance intervals, optimize splits and coordinate with McCulloch Drive

McCulloch Drive Improvements



Improvement: Update clearance intervals, optimize splits, and improve coordination

The Galleria Improvements

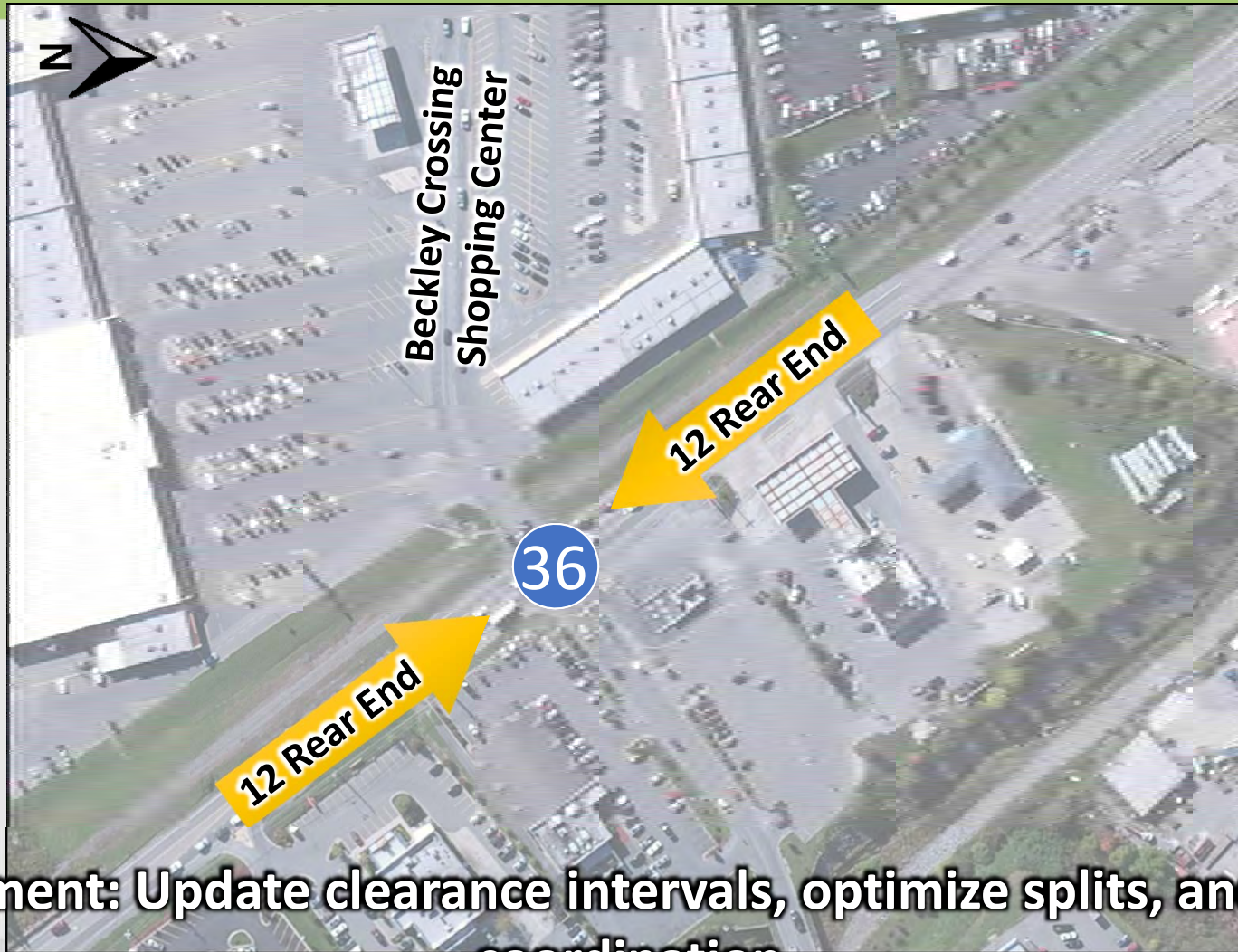


The Galleria Improvements



Estimated Project Costs: \$50,000

Beckley Crossing Shopping Center (US 19) Improvements



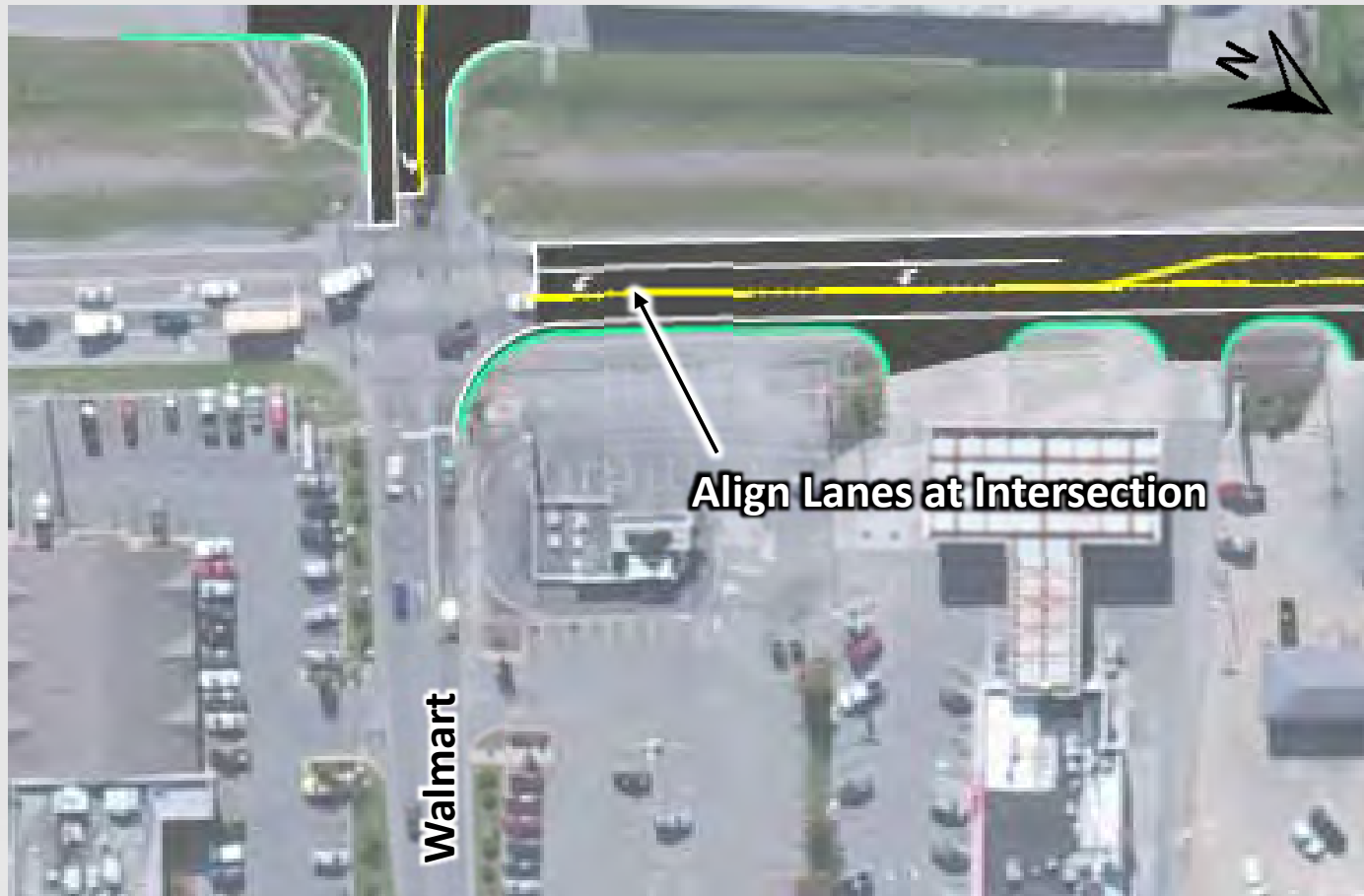
Improvement: Update clearance intervals, optimize splits, and improve coordination

Beckley Crossing Shopping Center (US 19) Improvements



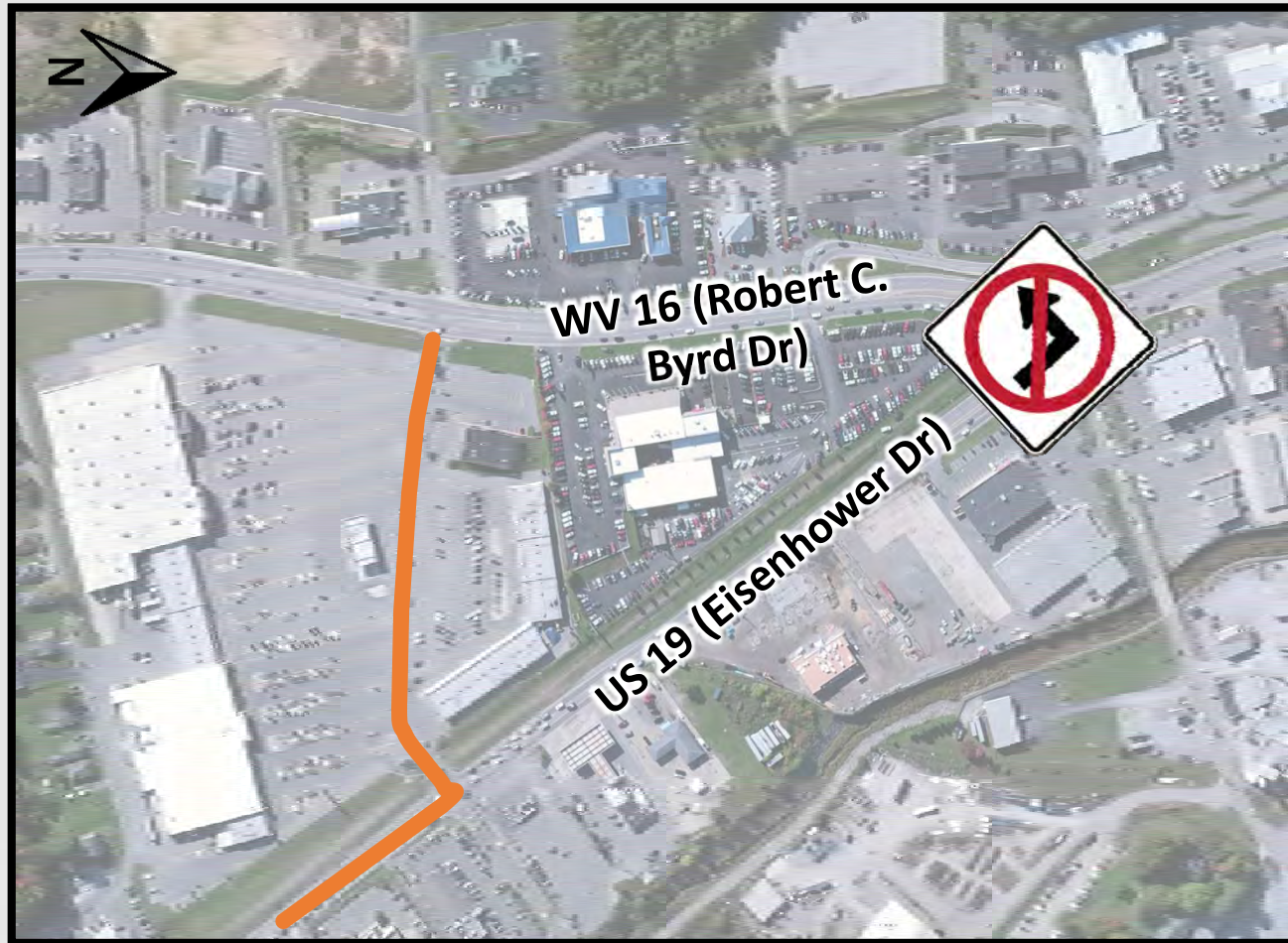
BURGESS & NIPLE

Beckley Crossing Shopping Center (US 19) Improvements



Estimated Project Costs: \$100,000

Beckley Crossing Shopping Center (US 19) Improvements



Beckley Crossing Shopping Center (US 19) Improvements



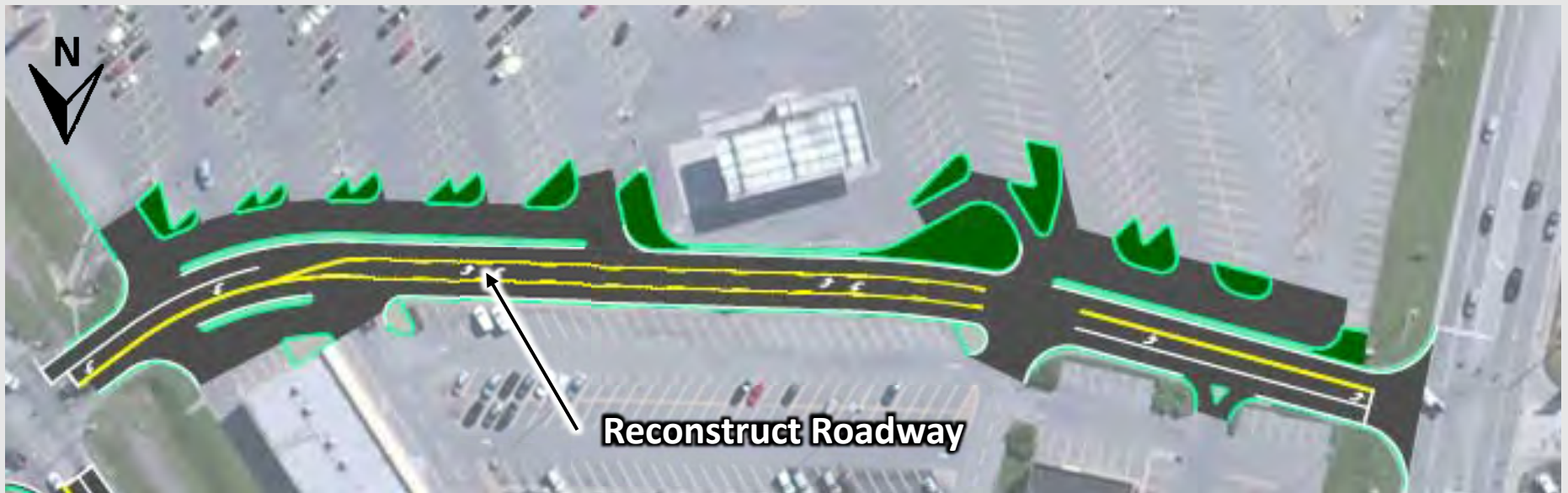
BURGESS & NIPLE

Beckley Crossing Shopping Center (US 19) Improvements



BURGESS & NIPLE

Beckley Crossing Shopping Center (US 19) Improvements



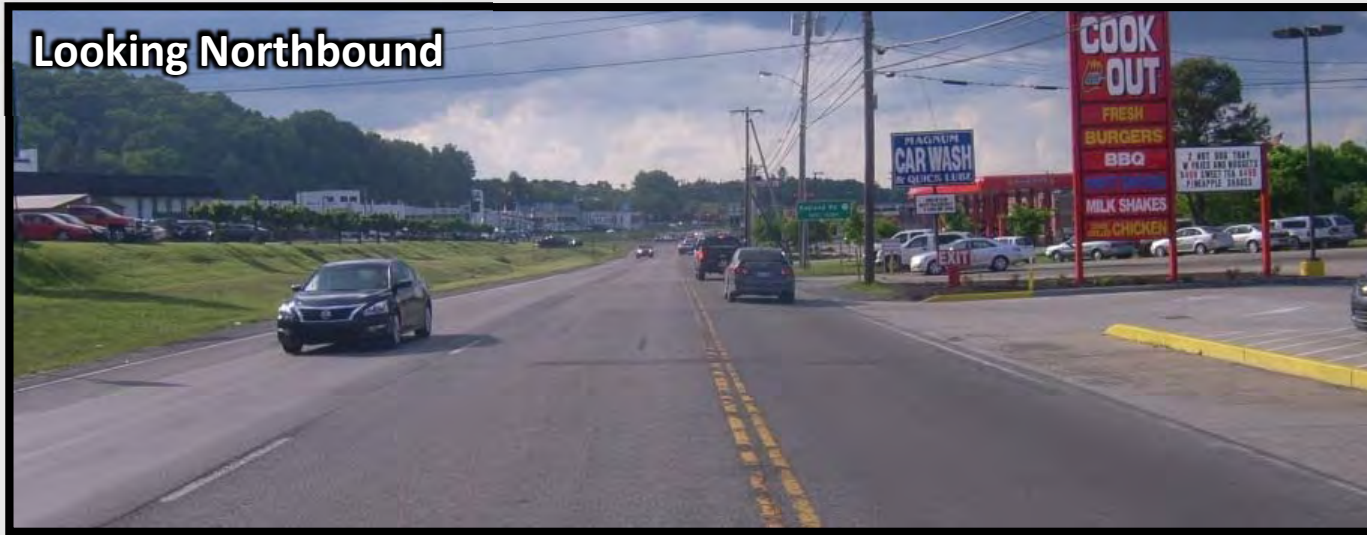
Estimated Project Costs: \$1,500,000

US 19 between Ragland Rd & McCulloch Dr Improvements



US 19 between Ragland Rd & McCulloch Dr Improvements

Looking Northbound

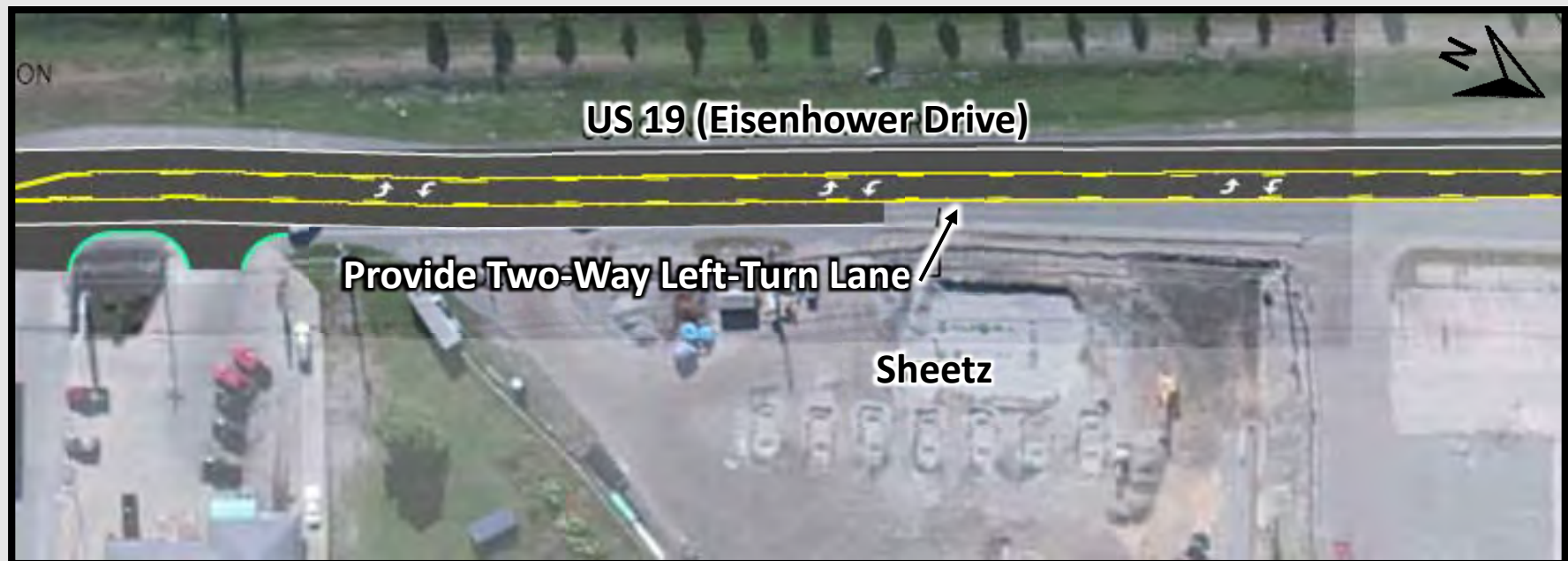


BURGESS & NIPLE



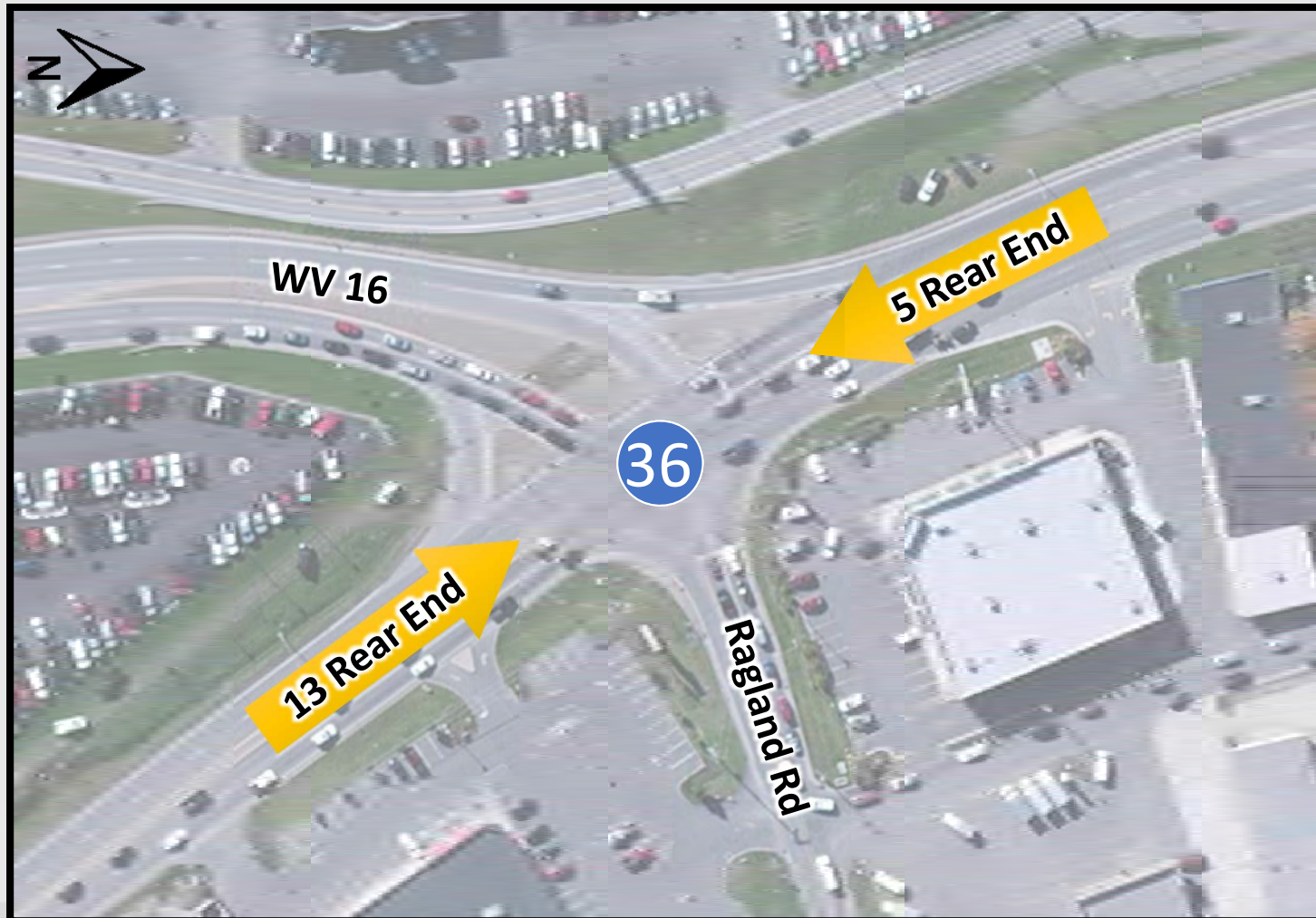
Looking Southbound

US 19 between Ragland Rd & McCulloch Dr Improvements

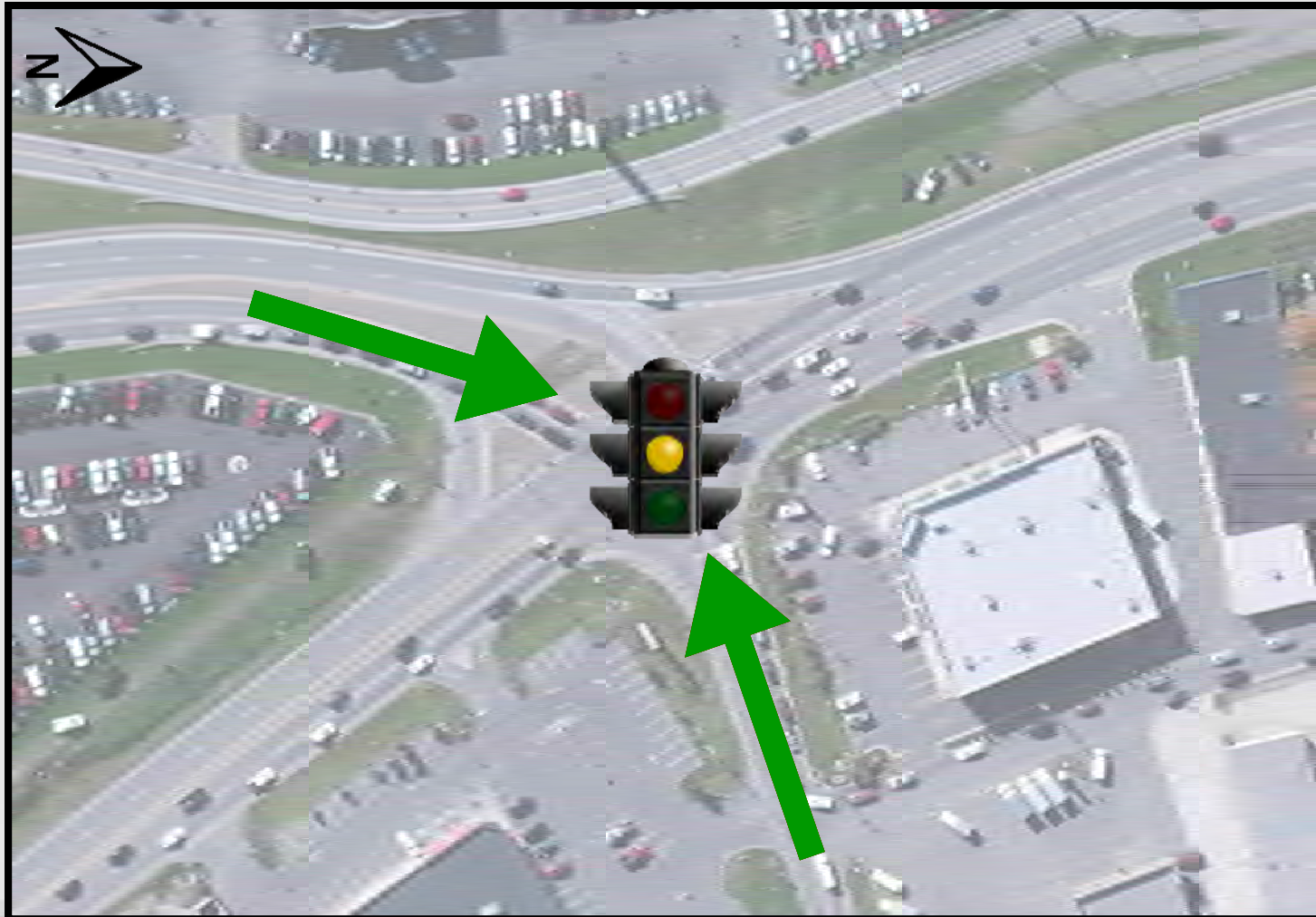


Estimated Project Costs: \$50,000

US 19 and WV 16/Ragland Road Improvements

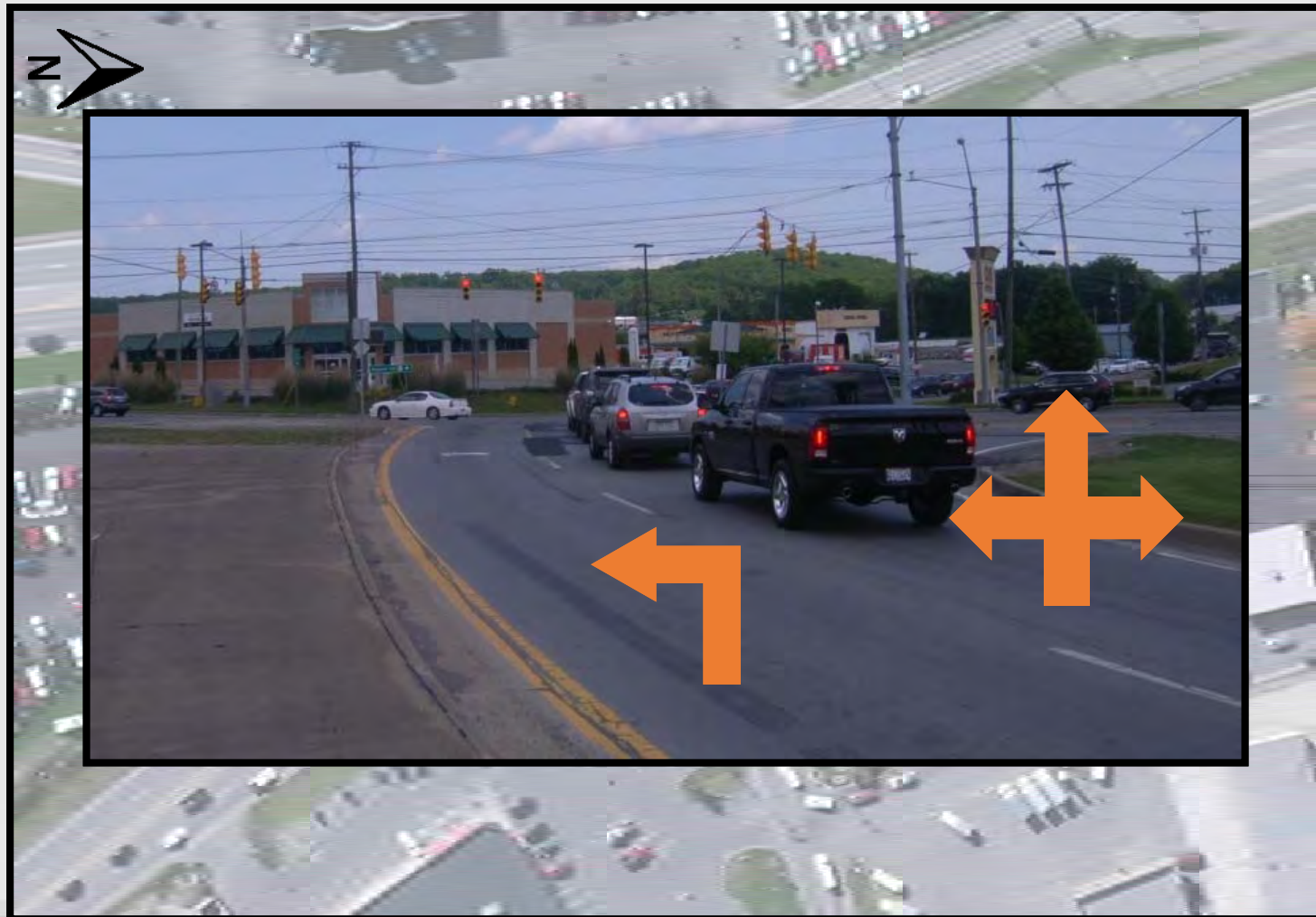


US 19 and WV 16/Ragland Road Improvements



BURGESS & NIPLE

US 19 and WV 16/Ragland Road Improvements



BURGESS & NIPLE

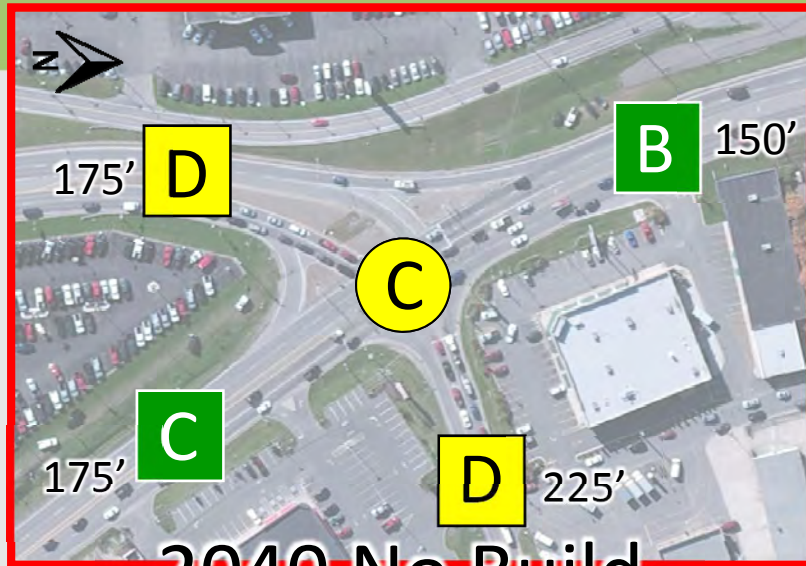
US 19 and WV 16/Ragland Road Improvements



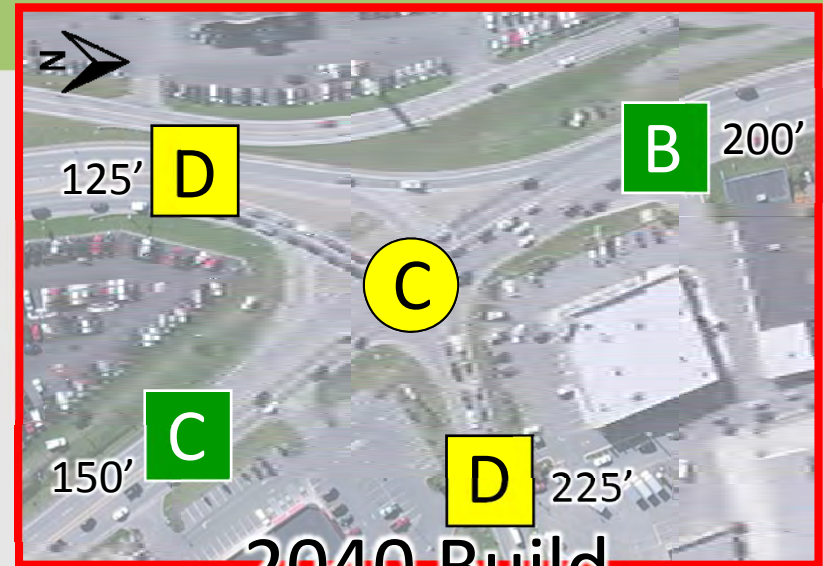
BURGESS & NIPLE

Estimated Project Costs: \$1,800,000

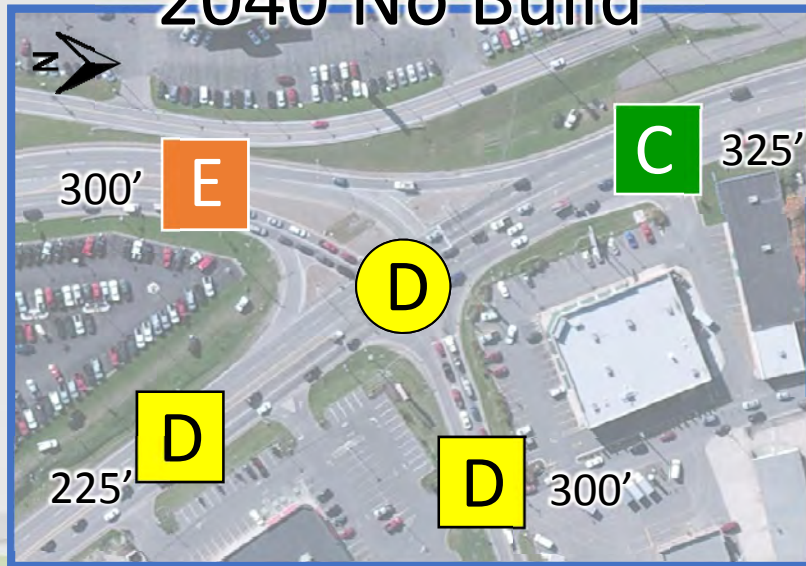
US 19 and WV 16/Ragland Road Improvements



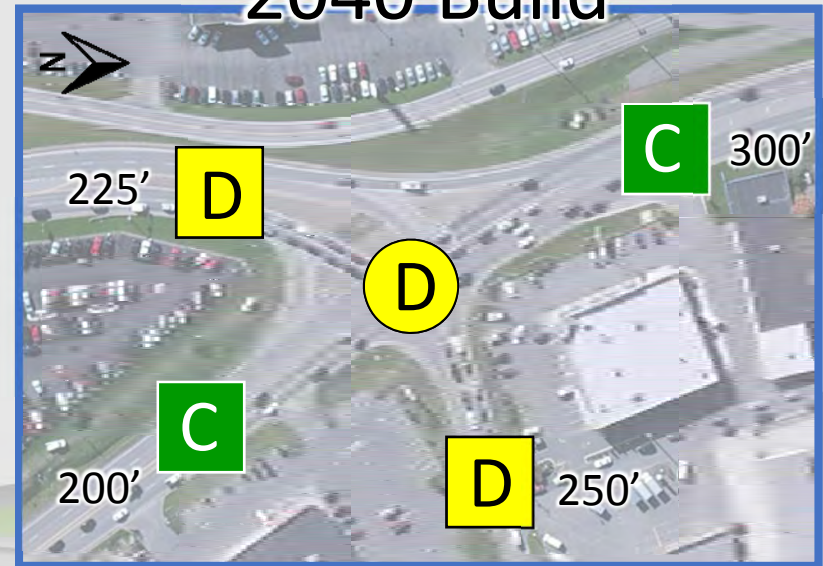
AM



2040 Build

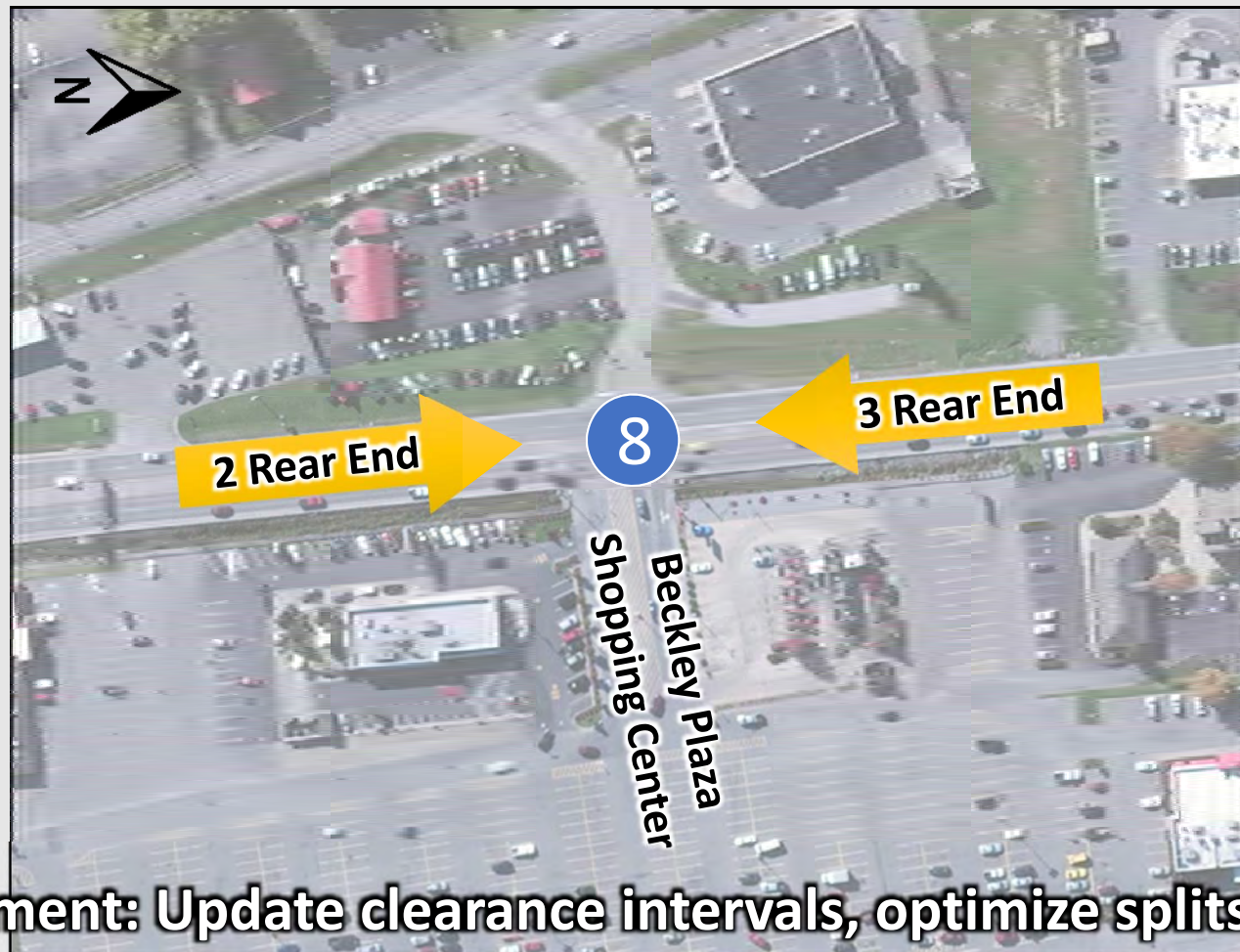


PM



BURGESS & NIPLE

Beckley Plaza Improvements

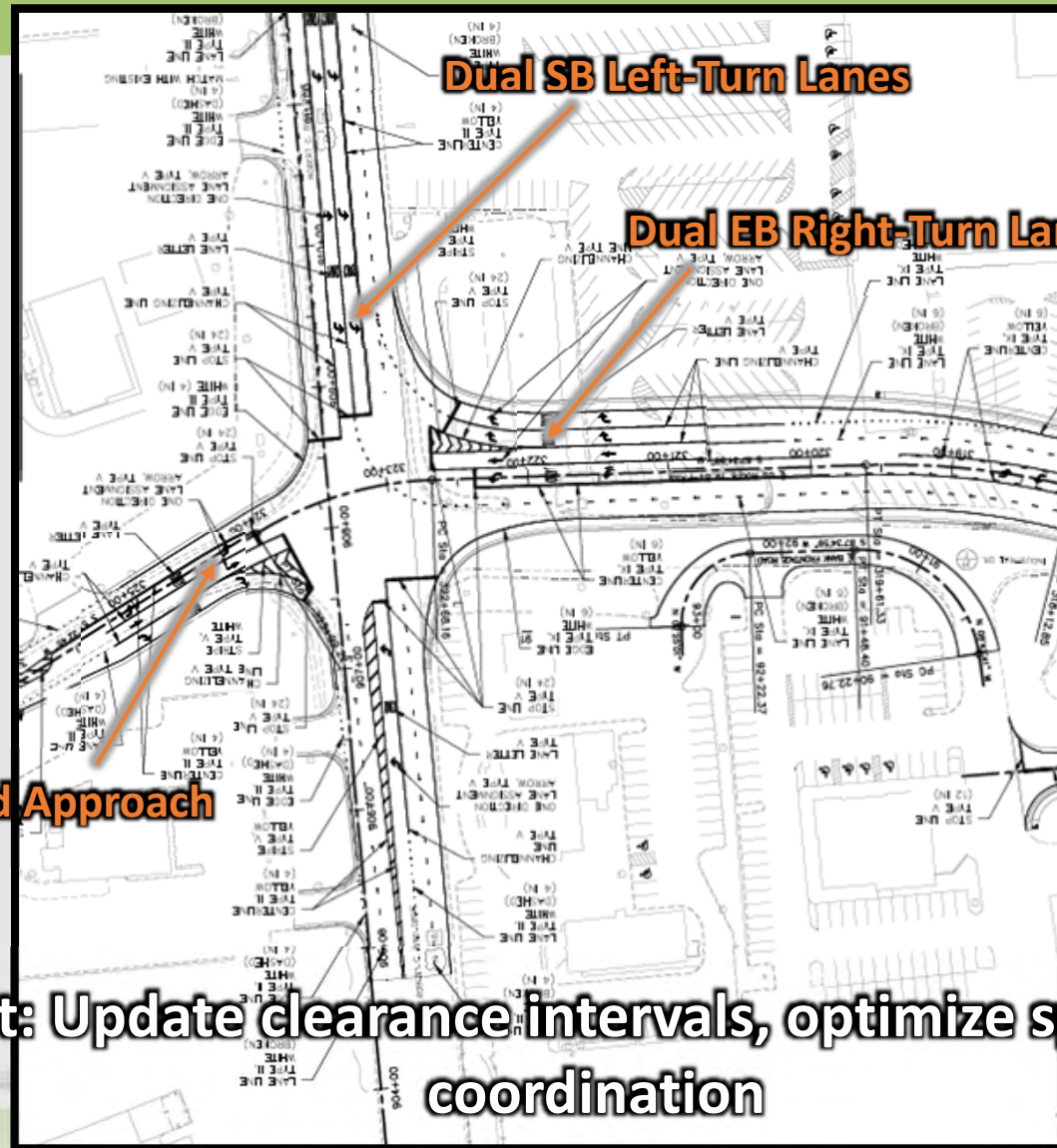


Improvement: Update clearance intervals, optimize splits, improve coordination, and fix faulty detection

Pinewood Drive/Industrial Drive Improvements



Pinewood Drive/Industrial Drive Improvements



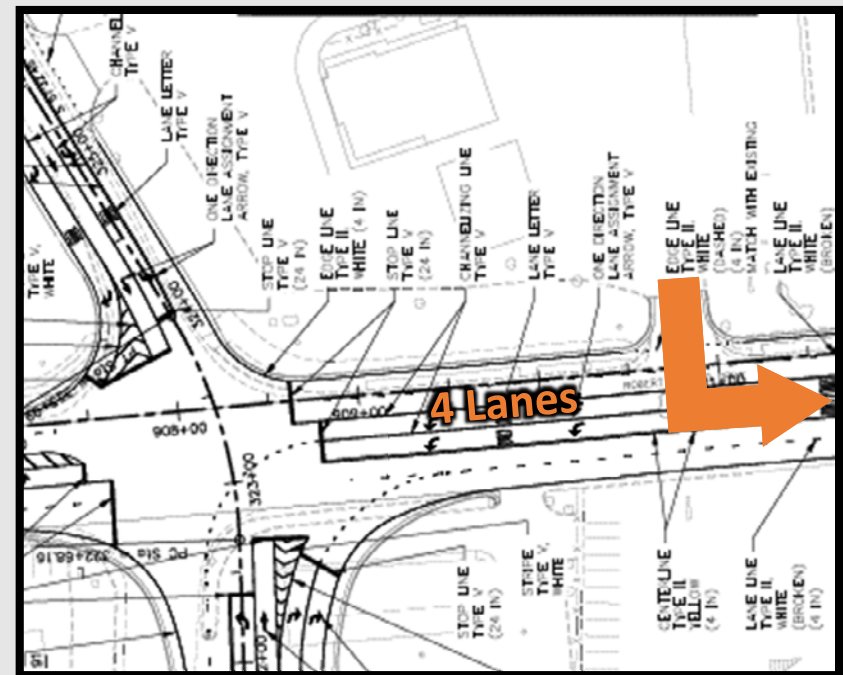
Improvement: Update clearance intervals, optimize splits, and improve coordination

BURGESS & NIPLE

Nell Jean Square Improvements



Nell Jean Square Improvements



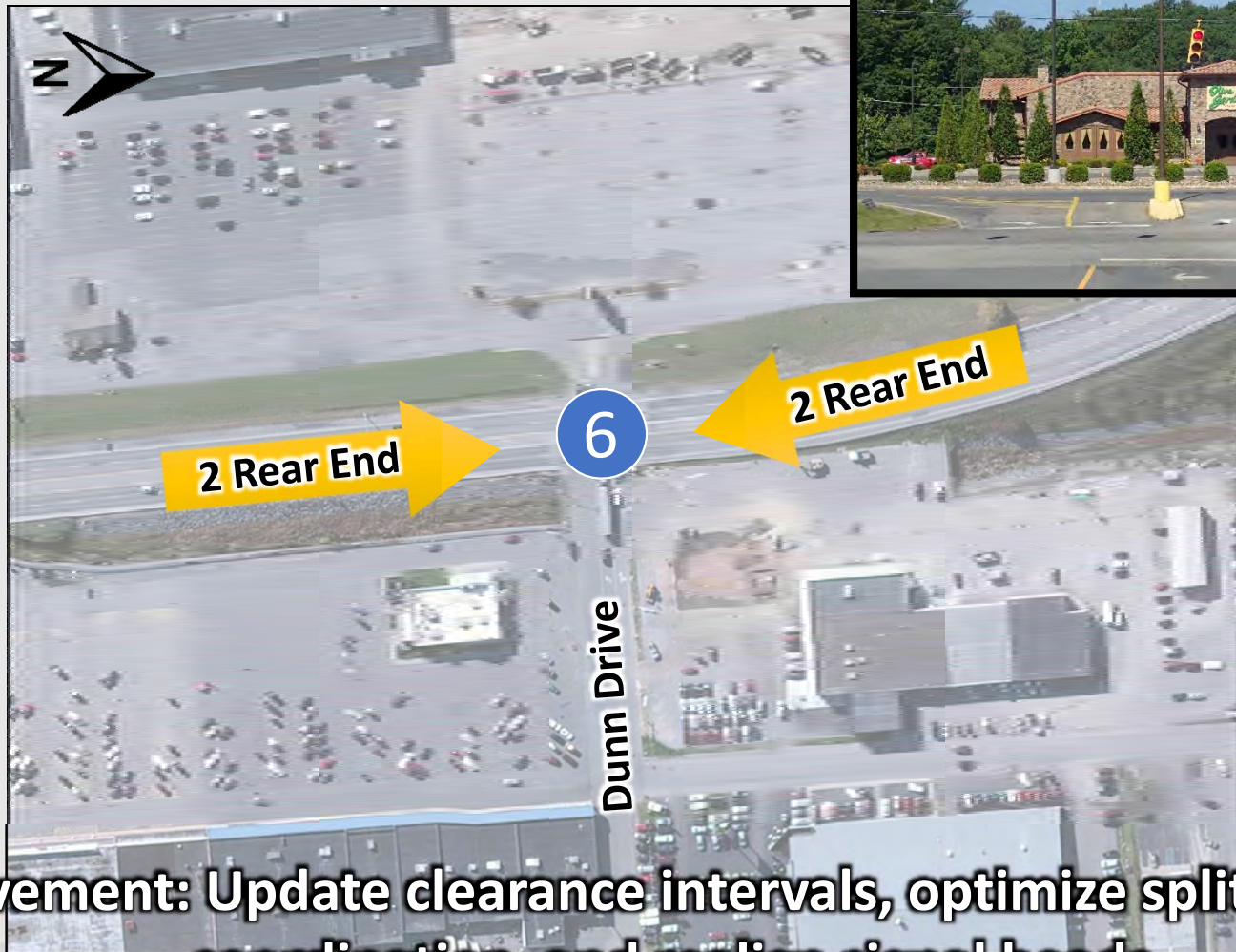
Nell Jean Square Improvements



Estimated Project Costs: \$25,000

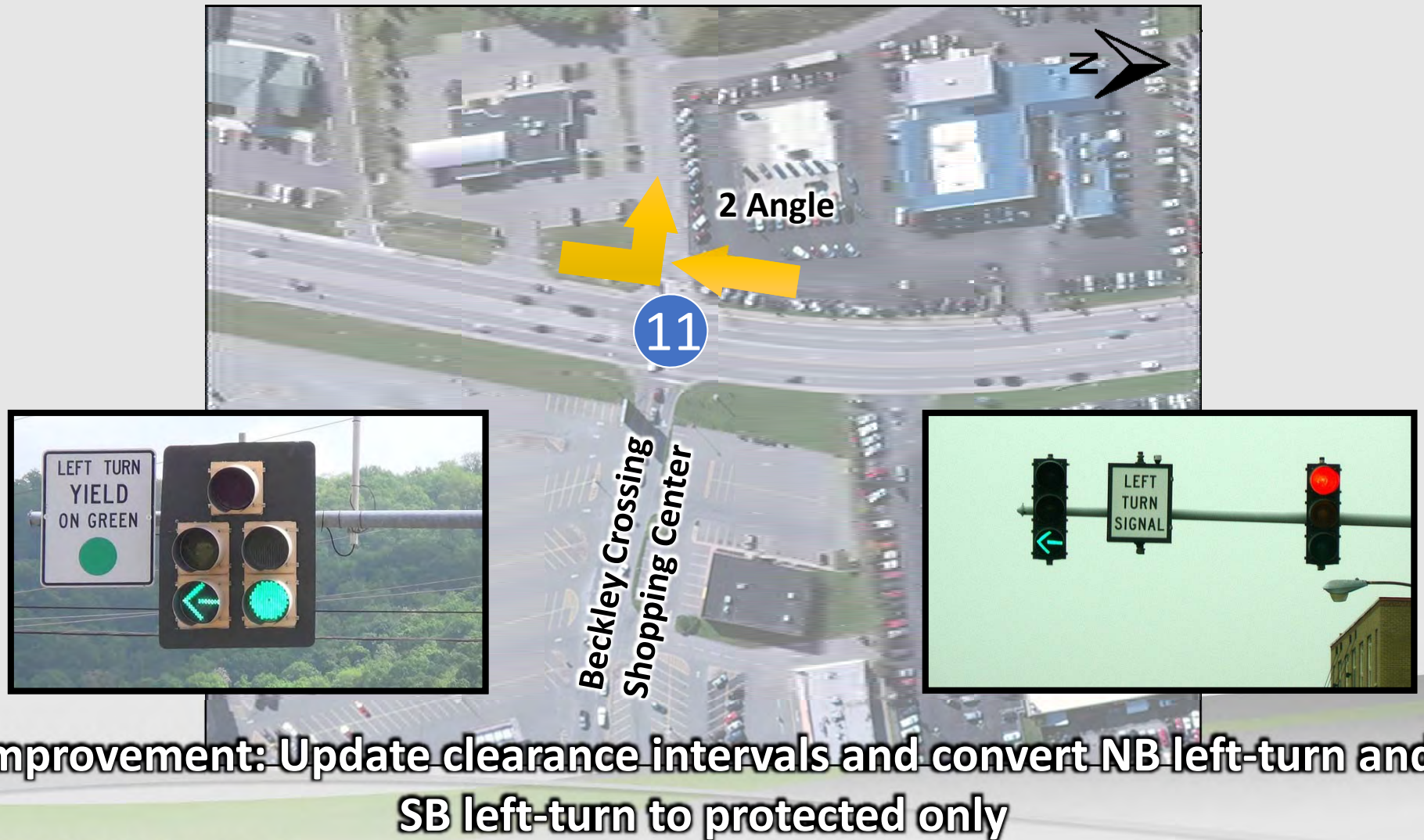
BURGESS & NIPLE

Dunn Drive Improvements



Improvement: Update clearance intervals, optimize splits, improve coordination, and realign signal heads

Beckley Crossing Shopping Center (WV 16) Improvements



Improvement Concept Summary

- [Johnstown Road](#)
- [Rural Acres Drive/Stanaford Road](#) (\$750,000)
- [McCulloch Drive](#)
- [The Galleria](#) (\$50,000)
- [Beckley Crossing Shopping Center Alignment](#) (\$100,000)
- [Beckley Crossing Shopping Center Improvements](#) (\$1,500,000)
- [US 19 between Ragland Road and McCulloch Drive](#) (\$50,000)
- [US 19 and WV 16/Ragland Road](#) (\$1,800,000)
- [Beckley Plaza Shopping Center](#)
- [Pinewood Drive/Industrial Drive](#)
- [Nell Jean Square](#) (\$25,000)
- [Dunn Drive](#)
- [Beckley Crossing Shopping Center at WV 16](#)

Next Steps

- Develop recommended concepts
- Final Report in early 2018
 - Email notification
 - Posted on FRM website